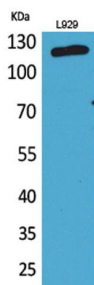
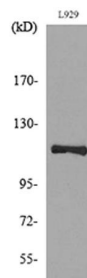


<b>Cat. No:</b>	AB-81337
<b>Conjugate:</b>	Unconjugated
<b>Size:</b>	100 µg
<b>Clone:</b>	POLY
<b>Concentration:</b>	1mg/ml
<b>Host:</b>	Rabbit
<b>Isotype:</b>	IgG
<b>Immunogen:</b>	The antiserum was produced against synthesized peptide derived from the Internal region of human LAMP1. AA range:211-260
<b>Reactivity:</b>	Human, Mouse, Rat
<b>Applications:</b>	Western Blot: 1/500 - 1/2000
<b>Molecular Weight:</b>	120kDa
<b>Purification:</b>	The antibody was affinity-purified from rabbit antiserum by affinity-chromatography using epitope-specific immunogen.
<b>Synonyms:</b>	LAMP1; Lysosome-associated membrane glycoprotein 1; LAMP-1; Lysosome-associated membrane protein 1; CD107 antigen-like family member A; CD107a
<b>Background:</b>	The protein encoded by this gene is a member of a family of membrane glycoproteins. This glycoprotein provides selectins with carbohydrate ligands. It may also play a role in tumor cell metastasis.
<b>Form:</b>	Liquid
<b>Buffer:</b>	Liquid in PBS containing 50% glycerol, 0.5% BSA and 0.02% sodium azide.
<b>Storage:</b>	Store at -20°C. Avoid repeated freeze-thaw cycles.



Western Blot analysis of L929 cells using CD107a Polyclonal Antibody. Secondary antibody was diluted at 1:20000s.



Western blot analysis of lysate from L929 cells, using LAMP1 Antibody.

**For Research use only  
IMMUNOLOGICAL SCIENCES**