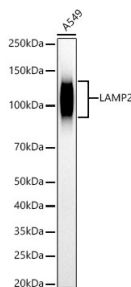
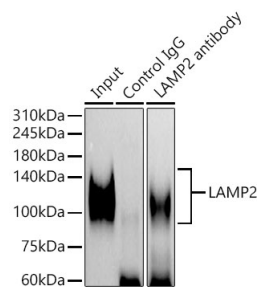


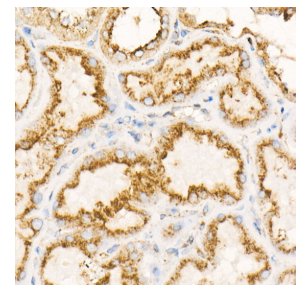
Cat. No:	MAB-94771
Conjugate:	Unconjugated
Size:	100 ug
Clone:	ARC54762
Concentration:	1mg/ml
Host:	Rabbit
Isotype:	IgG
Immunogen:	Recombinant fusion protein containing a sequence corresponding to amino acids 29-375 of human LAMP2.
Reactivity:	Human, Mouse
Applications:	Western Blot: 1:10000 - 1:40000 Immunohistochemistry (paraffin-embedded tissues): 1:50 - 1:200 Immunofluorescence: 1:50 - 1:200 Immunocytochemistry: 1:50 - 1:200 Immunoprecipitation: 1:50 - 1:200
Molecular Weight:	100-130kDa
Purification:	Affinity purification
Synonyms:	DND; LAMPB; CD107b; LAMP-2; LGP-96; LGP110
Background:	The protein encoded by this gene is a member of a family of membrane glycoproteins. This glycoprotein provides selectins with carbohydrate ligands. It may play a role in tumor cell metastasis. It may also function in the protection, maintenance, and adhesion of the lysosome. Alternative splicing of this gene results in multiple transcript variants encoding distinct proteins.
Form:	Liquid
Buffer:	PBS with 0.05% proclin300,0.05% BSA,50% glycerol,pH7.3.
Storage:	Store at -20°C. Avoid freeze / thaw cycles.



Western blot analysis of various lysates, using LAMP2 antibody at 1:40000 dilution.
Secondary antibody: HRP Goat Anti-Rabbit IgG (H+L) at 1:10000 dilution.
Lysates/proteins: 25ug per lane.
Blocking buffer: 3% nonfat dry milk in TBST.

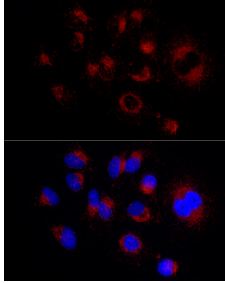


Immunoprecipitation analysis of 300ug extracts of 293T cells using 3ug LAMP2 antibody.
Western blot was performed from the immunoprecipitate using LAMP2 antibody at a dilution of 1:200.



Immunohistochemistry of paraffin-embedded Human kidney using LAMP2 antibody at dilution of 1:200 (40x lens). Perform high pressure antigen retrieval with 10 mM citrate buffer pH 6.0 before commencing with IHC staining protocol.

Detection: ECL West Pico Plus.
Exposure time: 30s.



Immunofluorescence analysis of HeLa
using LAMP2 Rabbit mAb at dilution of
1:200 (40x lens). Blue: DAPI for
nuclear staining.

**For Research use only
IMMUNOLOGICAL SCIENCES**