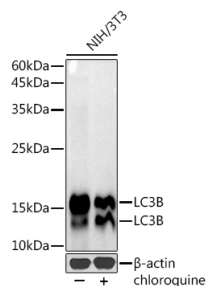
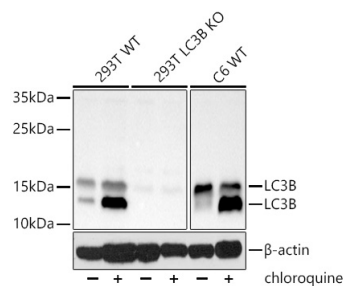


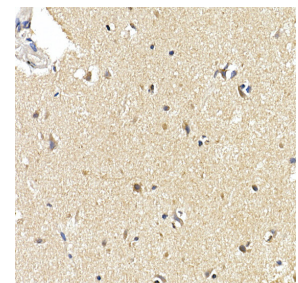
Cat. No:	AB-84447
Conjugate:	Unconjugated
Size:	100 ug
Clone:	POLY
Concentration:	1mg/ml
Host:	Rb
Isotype:	IgG
Immunogen:	Recombinant fusion protein containing a sequence corresponding to amino acids 2-107 of human LC3B.
Reactivity:	Human, Mouse, Rat
Applications:	Western Blot: 1:500 - 1:2000 Immunohistochemistry: 1:50 - 1:200 Immunofluorescence / Immunocytochemistry: 1:50 - 1:200 Immunoprecipitation: 1:50 - 1:200
Molecular Weight:	14KDa/16KDa
Purification:	Aff. Pur.
Synonyms:	LC3B;ATG8F;MAP1LC3B-a;MAP1A/1BLC3;MAP1LC3B;LC3A/LC3B
Background:	The product of this gene is a subunit of neuronal microtubule-associated MAP1A and MAP1B proteins, which are involved in microtubule assembly and important for neurogenesis. Studies on the rat homolog implicate a role for this gene in autophagy, a process that involves the bulk degradation of cytoplasmic component.
Form:	Liquid
Buffer:	PBS with 0.05% proclin300,0.05% BSA,50% glycerol,pH7.3.
Storage:	Store at -20°C. Avoid freeze / thaw cycles.



Western blot analysis of extracts of NIH/3T3 cells, using LC3B antibody at 1:1000 dilution. NIH/3T3 cells were treated by Chloroquine (50 μ M) at 37°C for 20 hours.
Secondary antibody: HRP Goat Anti-Rabbit IgG (H+L) at 1:10000 dilution.
Lysates/proteins: 25ug per lane.



Western blot analysis of extracts from wild type (WT) and [KO Validated] LC3B Rabbit mAb knockout (KO) 293T cells, using [KO Validated] LC3B Rabbit mAb at 1:1000 dilution. 293T and C6 cells were treated by Chloroquine (50 μ M) at 37°C for 20 hours.
Secondary antibody: HRP Goat Anti-



Immunohistochemistry of paraffinembedded human brain using [KO Validated] LC3B Rabbit mAb at dilution of 1:100(40x ens). Perform high pressure antigen retrieval with 10 mM citrate buffer pH 6.0 before commencing with IHC staining protocol.

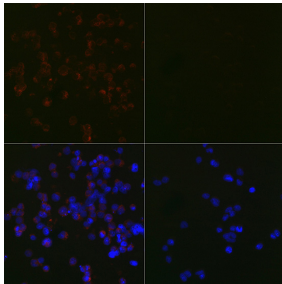
Blocking buffer: 3% nonfat dry milk in
TBST.

Detection: ECL West Pico Plus.
Exposure time: 60s.

Rabbit IgG (H+L) (AS014) at 1:10000
dilution.

Lysates/proteins: 25ug per lane.
Blocking buffer: 3% nonfat dry milk in
TBST.

Detection: ECL Basic Kit (RM00020).
Exposure time: 30s.



Immunofluorescence analysis of 293T
Treated with Chloroquine and 293T cells
using [KO Validated] LC3B Rabbit mAb
at dilution of 1:100 (40x lens).
Blue: DAPI for nuclear staining.