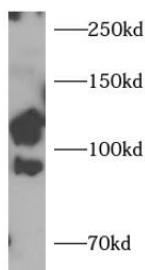


| | |
|--------------------------|---|
| Cat. No: | AB-81888 |
| Conjugate: | Unconjugated |
| Size: | 100 ug |
| Clone: | POLY |
| Concentration: | 1mg/ml |
| Host: | Rabbit |
| Isotype: | IgG |
| Immunogen: | Synthesized peptide derived from part region of human protein |
| Reactivity: | Human, Mouse |
| Applications: | Western Blot: 1:500-2000 |
| Molecular Weight: | 99kD |
| Purification: | The antibody was affinity-purified from rabbit antiserum by affinity-chromatography using epitope-specific immunogen. |
| Synonyms: | Leucine-rich repeat-containing G-protein coupled receptor 5 G-protein coupled receptor 49 G-protein coupled receptor 67 G-protein coupled receptor HG38 LGR5 GPR49 GPR67 |
| Background: | The protein encoded by this gene is a leucine-rich repeat-containing receptor (LGR) and member of the G protein-coupled, 7-transmembrane receptor (GPCR) superfamily. The encoded protein is a receptor for R-spondins and is involved in the canonical Wnt signaling pathway. This protein plays a role in the formation and maintenance of adult intestinal stem cells during postembryonic development. Several transcript variants encoding different isoforms have been found for this gene. |
| Form: | Liquid |
| Buffer: | Liquid in PBS containing 50% glycerol, 0.5% BSA and 0.02% sodium azide. |
| Storage: | Store at -20°C. Avoid repeated freeze-thaw cycles. |



mouse brain tissue were subjected to SDS PAGE followed by western blot with (LGR5 antibody) at dilution of 1:1000

**For Research use only
IMMUNOLOGICAL SCIENCES**