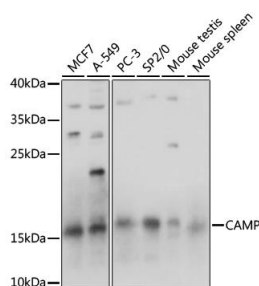
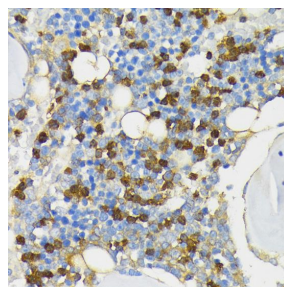


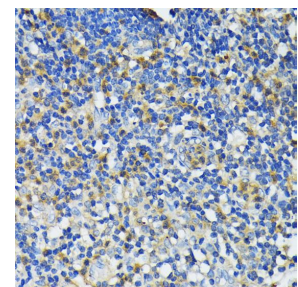
Cat. No:	AB-84264
Size:	100 ug
Clone:	POLY
Concentration:	1mg/ml
Host:	Rb
Isotype:	IgG
Immunogen:	Recombinant fusion protein containing a sequence corresponding to amino acids 31-170 of human CAMP
Reactivity:	Hu, Ms,Rt
Applications:	Western Blot: 1:500 - 1:2000 Immunohistochemistry: 1:50 - 1:200 Immunofluorescence: 1:50 - 1:200
Molecular Weight:	15kDa
Purification:	Aff. Pur.
Synonyms:	CAMP;CAP-18;CAP18;CRAMP;FALL-39;FALL39;HSD26;LL37
Background:	This gene encodes a member of an antimicrobial peptide family, characterized by a highly conserved N-terminal signal peptide containing a cathelin domain and a structurally variable cationic antimicrobial peptide, which is produced by extracellular proteolysis from the C-terminus. In addition to its antibacterial, antifungal, and antiviral activities, the encoded protein functions in cell chemotaxis, immune mediator induction, and inflammatory response regulation.
Form:	Liquid
Buffer:	PBS with 0.02% sodium azide,50% glycerol,pH7.3.
Storage:	Store at -20°C. Avoid freeze / thaw cycles.



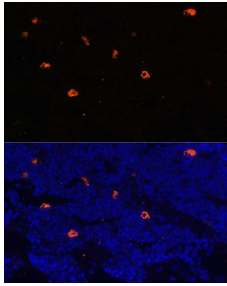
Western blot analysis of extracts of various cell lines, using LL-37 antibody at 1:1000 dilution.
Secondary antibody: HRP Goat Anti-Rabbit IgG (H+L) at 1:10000 dilution. Lysates/proteins: 25ug per lane. Blocking buffer: 3% nonfat dry milk in TBST.
Detection: ECL West Pico Plus.
Exposure time: 10s.



Immunohistochemistry of paraffin embedded rat bone marrow using LL-37 antibody at dilution of 1:200 (40x lens).



Immunohistochemistry of paraffin embedded human appendix using LL-37 antibody at dilution of 1:200 (40x lens).



Immunofluorescence analysis of rat bone marrow using LL-37 antibody at dilution of 1:100.
Blue: DAPI for nuclear staining.

**For Research use only
IMMUNOLOGICAL SCIENCES**