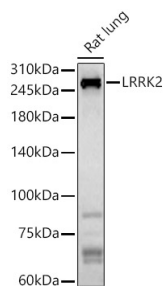
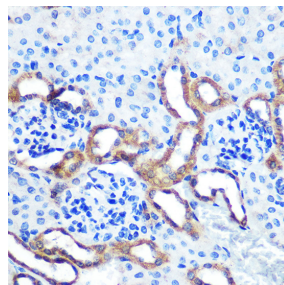


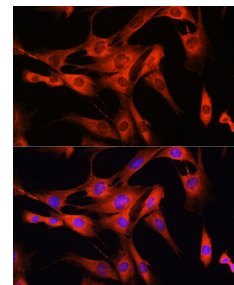
<b>Cat. No:</b>	AB-82808
<b>Size:</b>	100 ug
<b>Clone:</b>	POLY
<b>Concentration:</b>	1mg/ml
<b>Host:</b>	Rabbit
<b>Isotype:</b>	IgG
<b>Immunogen:</b>	Recombinant fusion protein containing a sequence corresponding to amino acids 750-910 of human LRRK2
<b>Reactivity:</b>	Hu, Ms, Rt WB 1:500 - 1:1000 IHC 1:50 - 1:200 IF 1:50 - 1:200 ICC 1:50 - 1:200
<b>Applications:</b>	
<b>Molecular Weight:</b>	290 kDa
<b>Purification:</b>	Aff. Pur.
<b>Synonyms:</b>	PARK8; RIPK7; ROCO2; AURA17; DARDARIN
<b>Background:</b>	This gene is a member of the leucine-rich repeat kinase family and encodes a protein with an ankyrin repeat region, a leucine-rich repeat (LRR) domain, a kinase domain, a DFG-like motif, a RAS domain, a GTPase domain, a MLK-like domain, and a WD40 domain. The protein is present largely in the cytoplasm but also associates with the mitochondrial outer membrane. Mutations in this gene have been associated with Parkinson disease-8.
<b>Form:</b>	Liquid
<b>Buffer:</b>	PBS with 0.01% thiomersal, 50% glycerol, pH7.3.
<b>Storage:</b>	Store at -20°C. Avoid freeze / thaw cycles



Western blot analysis of Rat lung, using LRRK2 antibody at 1:800 dilution.  
Secondary Antibody: HRP Goat Anti-Rabbit IgG (H+L) at 1:10000 dilution.  
Lysates/proteins: 25ug per lane.  
Blocking buffer: 3% nonfat dry milk in TBST.  
Detection: ECL Basic Kit.  
Exposure time: 180s.



Immunohistochemistry of paraffinembedded Mouse kidney using LRRK2 Rabbit pAb at dilution of 1:100 (40x lens).  
Perform microwave antigen retrieval with 10 mM PBS buffer pH 7.2 before commencing with IHC staining protocol



Immunofluorescence analysis of C2C12 cells using LRRK2 Rabbit pAb at dilution of 1:100 (40x lens).  
Blue: DAPI for nuclear staining.

**For Research use only  
IMMUNOLOGICAL SCIENCES**