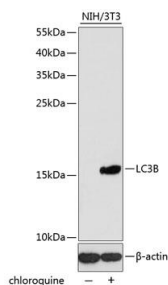
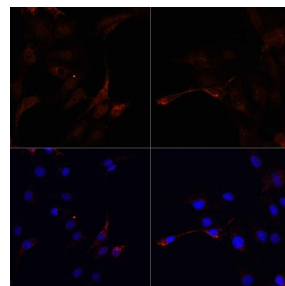


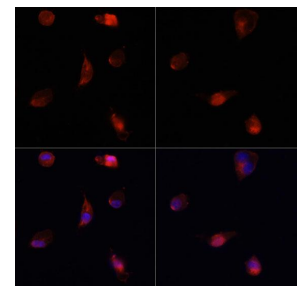
Cat. No:	AB-84132
Conjugate:	Unconjugated
Size:	100 ug
Clone:	POLY
Concentration:	1mg/ml
Host:	Rb
Isotype:	IgG
Immunogen:	A synthetic peptide corresponding to a sequence within amino acids 1-100 of human LC3B
Reactivity:	Hu, Ms, Rt
Applications:	Western Blot: 1:500 - 1:1000 Immunohistochemistry: 1:50 - 1:100 Immunofluorescence: 1:50 - 1:100
Molecular Weight:	16kDa
Purification:	Purified
Synonyms:	MAP1LC3B; ATG8F; LC3B; MAP1A/1BLC3; MAP1LC3B-a; microtubule associated protein 1 light chain 3 beta
Background:	The product of this gene is a subunit of neuronal microtubule-associated MAP1A and MAP1B proteins, which are involved in microtubule assembly and important for neurogenesis. Studies on the rat homolog implicate a role for this gene in autophagy, a process that involves the bulk degradation of cytoplasmic component.
Form:	Liquid
Buffer:	PBS with 0.02% sodium azide, 50% glycerol, pH7.3.
Storage:	Store at -20°C. Avoid freeze / thaw cycles.



Western blot analysis of extracts of NIH/3T3 cells, using LC3B antibody at 1:1000 dilution. NIH/3T3 cells were treated by Chloroquine (50 μ M) for 20 hours. Secondary antibody: HRP Goat Anti-Rabbit IgG (H+L) at 1:10000 dilution. Lysates/proteins: 25ug per lane Blocking buffer: 3% nonfat dry milk

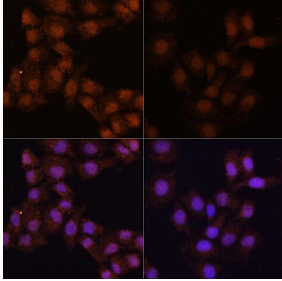


Immunofluorescence analysis of C6 cells using LC3B antibody at dilution of 1:100. C6 cells were treated by Chloroquine (50 μ M) for 20 hours(left). Blue: DAPI for nuclear staining.



Immunofluorescence analysis of NIH/3T3 cells using LC3B antibody at dilution of 1:100. NIH/3T3 cells were treated by Chloroquine (50 μ M) for 20 hours(left). Blue: DAPI for nuclear staining.

inTBST
Detection: ECL West Pico Plus
Exposure time: 3min.



Immunofluorescence analysis of HeLa cells using LC3B antibody at dilution of 1:100. HeLa cells were treated by Chloroquine (50 μ M) for 20 hours(left). Blue: DAPI for nuclear staining.

**For Research use only
IMMUNOLOGICAL SCIENCES**