

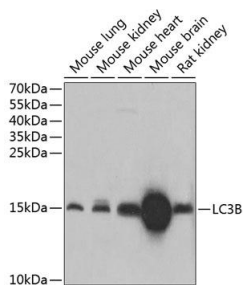
**Cat. No:** AB-83629  
**Conjugate:** Unconjugated  
**Size:** 100 ug  
**Clone:** POLY  
**Concentration:** 1mg/ml  
**Host:** Rb  
**Isotype:** IgG  
**Reactivity:** Hu, Ms, Rt

**Applications:** Western Blot: 1:500-1:2000  
 Immunohistochemistry (paraffin-embedded tissues): 1:50-1:200  
 Immunofluorescence: 1:20-1:200

**Molecular Weight:** 14kDa  
**Purification:** Purified  
**Synonyms:** ATG8F;LC3B;MAP1A/1BLC3;MAP1LC3B-a

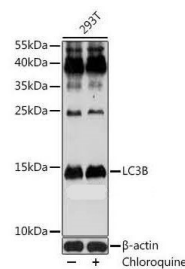
**Background:** The product of this gene is a subunit of neuronal microtubule-associated MAP1A and MAP1B proteins, which are involved in microtubule assembly and important for neurogenesis. Studies on the rat homolog implicate a role for this gene in autophagy, a process that involves the bulk degradation of cytoplasmic component.

**Form:** Liquid  
**Buffer:** PBS with 0.02% sodium azide, 50% glycerol pH 7.3  
**Storage:** Store at -20°C. Avoid freeze / thaw cycles.

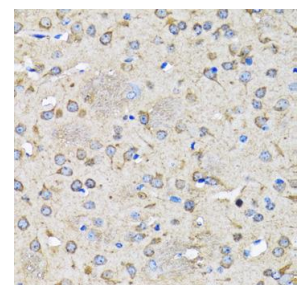


Western blot analysis of extracts of various cell lines, using LC3B antibody at 1:1000 dilution.

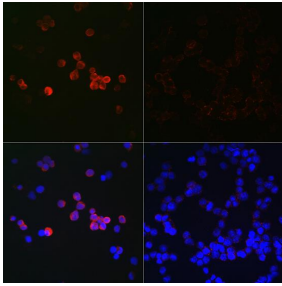
Secondary antibody: HRP Goat Anti-Rabbit IgG (H+L) at 1:10000 dilution.  
 Lysates/proteins: 25ug per lane.  
 Blocking buffer: 3% nonfat dry milk in TBST. Detection: ECL West Pico Plus.  
 Exposure time: 30s..



Western blot analysis of extracts of 293T cells, using LC3B antibody at 1:1000 dilution. 293T cells were treated by chloroquine (50 μM) at 37°C for 20 hours. Secondary antibody: HRP Goat Anti-Rabbit IgG (H+L) at 1:10000 dilution. Lysates/proteins: 25ug per lane. Blocking buffer: 3% BSA. Detection: ECL Enhanced Kit Exposure time: 180s.



Immunohistochemistry of paraffin-embedded rat brain using LC3B antibody at dilution of 1:100 (40x lens).



Immunofluorescence analysis of 293T cells using LC3B Rabbit pAb at dilution of 1:100 (40x lens). 293T cells were treated by Chloroquine (50  $\mu$ M) at 37°C for 20 hours.

Blue: DAPI for nuclear staining.

**For Research use only  
IMMUNOLOGICAL SCIENCES**