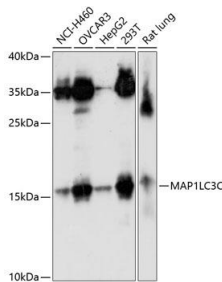
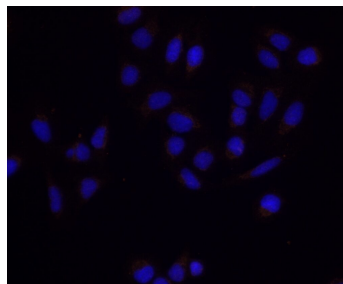


<b>Cat. No:</b>	AB-84026
<b>Conjugate:</b>	Unconjugated
<b>Size:</b>	Rabbit
<b>Clone:</b>	POLY
<b>Concentration:</b>	1mg/ml
<b>Host:</b>	Rb
<b>Isotype:</b>	IgG
<b>Immunogen:</b>	Recombinant fusion protein containing a sequence corresponding to amino acids 1-147 of human MAP1LC3C
<b>Reactivity:</b>	Hu, Rt
<b>Applications:</b>	Western Blot: 1:500 - 1:2000 Immunohistochemistry: 1:50 - 1:100 Immunofluorescence: 1:50 - 1:100
<b>Molecular Weight:</b>	17kDa
<b>Purification:</b>	Purified
<b>Synonyms:</b>	MAP1LC3C; ATG8J; microtubule-associated proteins 1A/1B light chain 3C
<b>Form:</b>	Liquid
<b>Buffer:</b>	PBS with 0.02% sodium azide, 50% glycerol pH 7.3
<b>Storage:</b>	Store at -20°C. Avoid freeze / thaw cycles.



Western blot analysis of extracts of various cell lines, using LC3C antibody at 1:1000 dilution.  
Secondary antibody: HRP Goat Anti-Rabbit IgG (H+L) at 1:10000 dilution.  
Lysates/proteins: 25ug per lane.  
Blocking buffer: 3% nonfat dry milk in TBST.  
Detection: ECL West Pico Plus.  
Exposure time: 90s.



Immunofluorescence image using LC3C antibody.

**For Research use only  
IMMUNOLOGICAL SCIENCES**