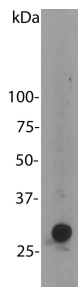
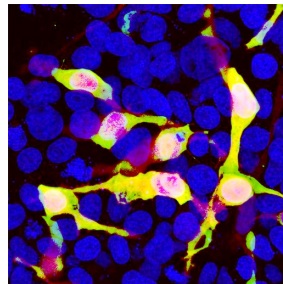


Cat. No:	AB-82368
Conjugate:	Unconjugated
Size:	100 ug
Clone:	POLY
Concentration:	1mg/mL
Host:	Ck
Isotype:	IgG
Immunogen:	Full length recombinant protein
Reactivity:	All Species
Applications:	Western blot: 1:1,000 Immunohistochemistry: 1:500 Immunofluorescence: 1:500.
Molecular Weight:	28kDa
Purification:	Aff. Pur.
Background:	Chicken Polyclonal Antibody to mCherry
Form:	Liquid
Storage:	Shipped on ice. Store at 4°C. For long term storage, leave frozen at -20°C. Avoid freeze / thaw cycles.



Blot of HEK293 cells transfected with pFin-EF1-mCherry vector, There is a strong clean band at about 30 kDa. HEK293 cells which were not transfected with this vector show no protein bands.



HEK293 cells transfected in the same way and viewed in the confocal microscope. Most Hek293 cells are not transfected so only the nucleus of these cells can be visualized with a blue DNA stain. Cells which are transfected with Cherry are bright red. Staining with CPCA-Cherry is shown in Green. Green antibody staining is only seen cells which express Cherry, as expected, and the superimposition of the green and red results in an orange signal. Interestingly stronger Cherry staining is seen in the nucleus, possibly due to degradation of some Cherry molecules to release the low molecular weight Cherry fluorochrome.

**For Research use only
IMMUNOLOGICAL SCIENCES**