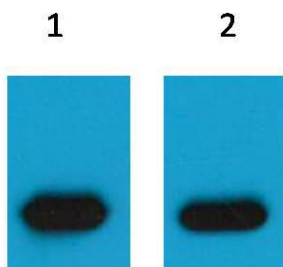


**Cat. No:** MAB-95043  
**Conjugate:** Unconjugated  
**Size:** 100 ug  
**Clone:** CH7  
**Concentration:** 1mg/ml  
**Host:** Mouse  
**Isotype:** IgG  
**Immunogen:** Recombinant Protein  
**Applications:** Western Blot:1/5000  
Immunofluorescence:1/200  
Immunohistochemistry:1/200  
Immunoprecipitation:1/100

**Background:** mCherry is a fluorophore (a fluorescent molecule) used in biotechnology as a tracer to follow the flow of fluids, as a marker when tagged to molecules and cells components. mCherry is a monomeric fluorescent construct with peak absorption/emission at 587 nm and 610 nm, respectively. It is resistant to photobleaching and is stable. mCherry is sometimes preferred to other fluorophores due to its colour, as well as its photostability compared to other monomeric fluorophores.

**Form:** Liquid  
**Buffer:** PBS with 0.02% sodium azide and 50% glycerol pH 7.4  
**Storage:** Store at -20°C. Avoid repeated freeze-thaw cycles.



Western blot analysis of mCherry  
Recombinant protein with mCherry  
diluted  
at 1) 1:5,000 2) 1:10,000

**For Research use only  
IMMUNOLOGICAL SCIENCES**