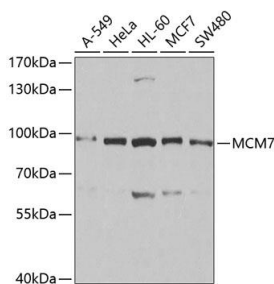


Cat. No:	AB-82788
Conjugate:	Unconjugated
Size:	100µg
Clone:	POLY
Concentration:	1mg/ml
Host:	Rb
Isotype:	IgG
Immunogen:	Recombinant fusion protein containing a sequence corresponding to amino acids 360-719 of human MCM7
Reactivity:	Hu, Ms
Applications:	Western Blot: 1:500 - 1:2000 Immunofluorescence: 1:50 - 1:200
Molecular Weight:	91kDa
Purification:	Aff. Pur.
Synonyms:	MCM7;CDC47;MCM2;P1.1-MCM3;P1CDC47;P85MCM;PNAS146;PPP1R104

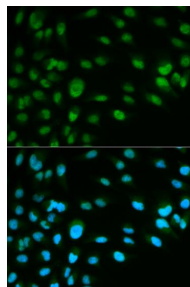
Background:

The protein encoded by this gene is one of the highly conserved mini-chromosome maintenance proteins (MCM) that are essential for the initiation of eukaryotic genome replication. The hexameric protein complex formed by the MCM proteins is a key component of the pre-replication complex (pre_RC) and may be involved in the formation of replication forks and in the recruitment of other DNA replication related proteins. The MCM complex consisting of this protein and MCM2, 4 and 6 proteins possesses DNA helicase activity, and may act as a DNA unwinding enzyme. Cyclin D1-dependent kinase, CDK4, is found to associate with this protein, and may regulate the binding of this protein with the tumorsuppressor protein RB1/RB. Alternatively spliced transcript variants encoding distinct isoforms have been reported.

Form:	Liquid
Buffer:	PBS with 0.02% sodium azide,50% glycerol,pH7.2
Storage:	Store at -20°C. Avoid freeze / thaw cycles



Western blot analysis of extracts of various cell lines, using MCM7 antibody at 1:1000 dilution. Secondary antibody: HRP Goat Anti-Rabbit IgG (H+L) at 1:10000



Immunofluorescence analysis of HeLa cells using MCM7 antibody. Blue: DAPI for nuclear staining.

dilution.
Lysates/proteins: 25ug per lane.
Blocking buffer: 3% nonfat dry milk in
TBST.
Detection: ECL West Pico Plus.
Exposure time: 10s.

**For Research use only
IMMUNOLOGICAL SCIENCES**