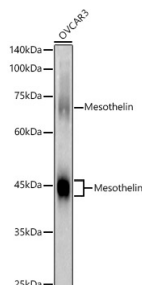


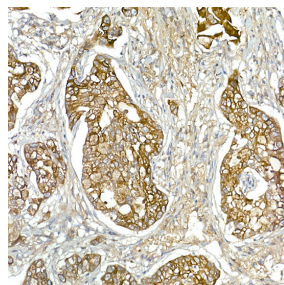
<b>Cat. No:</b>	AB-82814
<b>Conjugate:</b>	Unconjugated
<b>Size:</b>	100ug
<b>Clone:</b>	POLY
<b>Concentration:</b>	1mg/ml
<b>Host:</b>	Rabbit
<b>Isotype:</b>	IgG
<b>Immunogen:</b>	Recombinant fusion protein containing a sequence corresponding to amino acids 296-606 of human Mesothelin
<b>Reactivity:</b>	Hu,Ms,Rt
<b>Applications:</b>	Western Blot: 1:1000 - 1:5000 Immunohistochemistry (paraffin-embedded tissues): 1:50 - 1:200
<b>Molecular Weight:</b>	46-48kDa/70kDa
<b>Purification:</b>	Aff. Pur.
<b>Synonyms:</b>	MPF; SMRP; Mesothelin

**Background:** This gene encodes a preproprotein that is proteolytically processed to generate two protein products, megakaryocyte potentiating factor and mesothelin. Megakaryocyte potentiating factor functions as a cytokine that can stimulate colony formation of bone marrow megakaryocytes. Mesothelin is a glycosylphosphatidylinositol-anchored cell surface protein that may function as a cell adhesion protein. This protein is overexpressed in epithelial mesotheliomas, ovarian cancers and in specific squamous cell carcinomas. Alternative splicing results in multiple transcript variants, at least one of which encodes an isoform that is proteolytically processed.

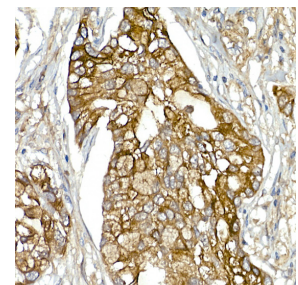
**Form:** Liquid  
**Buffer:** PBS with 0.05% proclin300,50% glycerol,pH7.3.  
**Storage:** Store at -20°C. Avoid freeze / thaw cycles.



Western blot analysis of lysates from OVCAR3 cells, using Mesothelin Rabbit pAb at 1:2000 dilution.  
 Secondary antibody: HRP Goat Anti-Rabbit IgG (H+L) at 1:10000 dilution.  
 Lysates/proteins: 25µg per lane.  
 Blocking buffer: 3% nonfat dry milk in

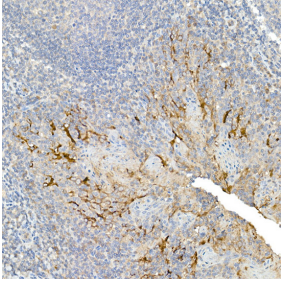


Immunohistochemistry analysis of Mesothelin in paraffin-embedded human lung cancer [200X] using Mesothelin Rabbit pAb at dilution of 1:50 (40x lens). Perform high pressure antigen retrieval with 10 mM citrate buffer pH 6.0 before commencing with IHC staining protocol.

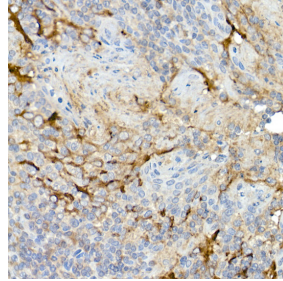


Immunohistochemistry analysis of Mesothelin in paraffin-embedded human lung cancer [400X] using Mesothelin Rabbit pAb at dilution of 1:50 (40x lens). Perform high pressure antigen retrieval with 10 mM citrate buffer pH 6.0 before commencing with IHC staining protocol.

TBST.  
Detection: ECL West Pico Plus.  
Exposure time: 10s.



Immunohistochemistry analysis of Mesothelin in paraffin-embedded Human tonsil [200X] using Mesothelin Rabbit pAb at dilution of 1:50 (40x lens). Perform high pressure antigen retrieval with 10 mM citrate buffer pH 6.0 before commencing with IHC staining protocol.



Immunohistochemistry analysis of Mesothelin in paraffin-embedded Human tonsil [400X] using Mesothelin Rabbit pAb at dilution of 1:50 (40x lens). Perform high pressure antigen retrieval with 10 mM citrate buffer pH 6.0 before commencing with IHC staining protocol.