

Cat. No: MAB-94442
Size: 100µg
Clone: MET24
Concentration: 1mg/ml
Host: Ms
Isotype: IgG
Immunogen: Recombinant protein of human MET
Reactivity: Hu

Applications: Western Blot: 1:500 -1:1000
Immunohistochemistry: 1:20 -1:50
Immunofluorescence: 1:20 - 1:50

Molecular Weight: 120kDa

Purification: Aff. Pur.

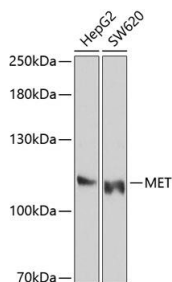
Synonyms: MET; AUTS9; DFNB97; HGFR; RCCP2; c-Met; hepato cyte growth factor receptor

Background: This gene encodes a member of the receptor tyrosine kinase family of proteins and the product of the proto-oncogene MET. The encoded preproprotein is proteolytically processed to generate alpha and beta subunits that are linked via disulfide bonds to form the mature receptor. Further processing of the beta subunit results in the formation of the M10 peptide, which has been shown to reduce lung fibrosis. Binding of its ligand, hepatocyte growth factor, induces dimerization and activation of the receptor, which plays a role in cellular survival, embryogenesis, and cellular migration and invasion. Mutations in this gene are associated with papillary renal cell carcinoma, hepatocellular carcinoma, and various head and neck cancers. Amplification and overexpression of this gene are also associated with multiple human cancers.

Form: Liquid

Buffer: PBS with 0.02% sodium azide, pH7.3.

Storage: Store at 4°C. Avoid freeze / thaw cycles.



Western blot analysis of extracts of various cell lines, using MET Antibody at 1:1000 dilution.

Secondary antibody: HRP Goat Anti-Mouse IgG (H+L) at 1:10000 dilution.

Lysates/proteins: 25ug per lane.

Blocking buffer: 3% nonfat dry milk in TBST.

Detection: ECL Enhanced Kit.
Exposure time: 30s.

**For Research use only
IMMUNOLOGICAL SCIENCES**