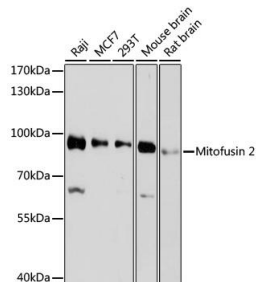
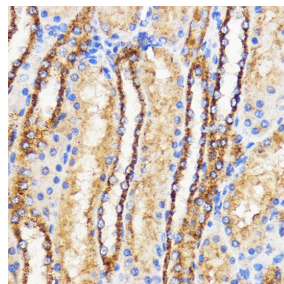


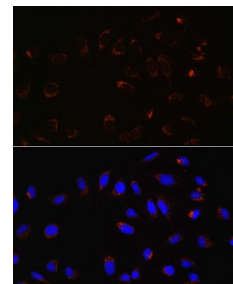
Cat. No:	AB-84303
Size:	100 ug
Clone:	POLY
Concentration:	1mg/ml
Host:	Rb
Isotype:	IgG
Immunogen:	A synthetic peptide corresponding to a sequence within amino acids 500-600 of human Mitofusin 2
Reactivity:	Hu, Ms, Rt
Applications:	Western Blot: 1:500 - 1:2000 Immunohistochemistry: 1:50 - 1:200 Immunofluorescence: 1:50 - 1:200 Immunoprecipitation: 1:50 - 1:200
Molecular Weight:	100kDa
Purification:	Aff. Pur.
Synonyms:	CMT2A;CMT2A2;CMT2A2A;CMT2A2B;CPRP1;HMSN6A;HSG; MARF;MFN2;Mitofusin 2
Background:	This gene encodes a mitochondrial membrane protein that participates in mitochondrial fusion and contributes to the maintenance and operation of the mitochondrial network. This protein is involved in the regulation of vascular smooth muscle cell proliferation, and it may play a role in the pathophysiology of obesity. Mutations in this gene cause Charcot-Marie-Tooth disease type 2A2, and hereditary motor and sensory neuropathy VI, which are both disorders of the peripheral nervous system. Defects in this gene have also been associated with early-onset stroke. Two transcript variants encoding the same protein have been identified.
Form:	Liquid
Buffer:	PBS with 0.02% sodium azide, 50% glycerol, pH7.3.
Storage:	Store at -20°C. Avoid freeze / thaw cycles.



Western blot analysis of extracts of various cell lines, using Mitofusin 2 antibody at 1:1000 dilution. Secondary antibody: HRP Goat Anti-Rabbit IgG (H+L) at 1:10000 dilution.



Immunohistochemistry of paraffin embedded Rat kidney using Mitofusin 2 Rabbit pAb at dilution of 1:100 (40x lens).

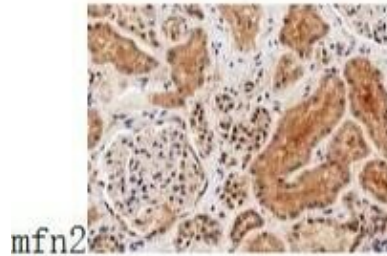


Immunofluorescence analysis of U-2 OS cells using MFN2 antibody at dilution of 1:100. Blue: DAPI for nuclear staining.

Lysates/proteins: 25ug per lane.
Blocking buffer: 3% nonfat dry milk in
TBST.
Detection: ECL West Pico Plus.
Exposure time: 90s.



Review for Mitofusin 2 Rabbit
Experiment Type Western blot (WB)
Sample Human bone marrow cancer cell



Review for Mitofusin 2 Rabbit pAb
Experiment Type Immunohistochemistry
(IHC) Sample Human bone marrow
cancer cell Description
Immunohistochemistry of paraffin-
embedded Human bone marrow cancer
cell by using antibody at dilution of
1:100

References

References for Mitofusin 2 Rabbit pAb
Journal:International Journal of Biological Sciences
Application:WB IF:4.06
Species:Rattus norvegicus
PMID:31754334
Title: MiR-93 regulates vascular smooth muscle cell proliferation, and neointimal formation through targeting Mfn2

**For Research use only
IMMUNOLOGICAL SCIENCES**