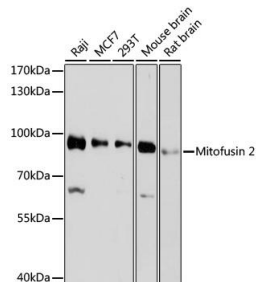
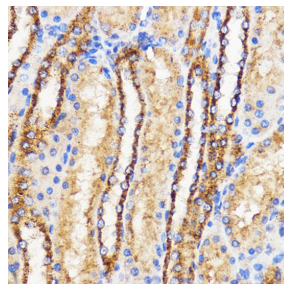


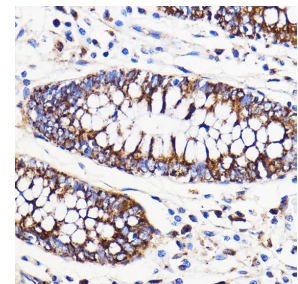
Cat. No:	MAB-94608
Size:	100 ug
Clone:	NIAR164
Concentration:	1mg/ml
Host:	Rb
Isotype:	IgG
Immunogen:	A synthetic peptide corresponding to a sequence within amino acids 500-600 of human Mitofusin 2
Reactivity:	Hu, Ms, Rt
Applications:	Western Blot: 1:500 - 1:2000 Immunohistochemistry: 1:50 - 1:200 Immunofluorescence: 1:50 - 1:200 Immunoprecipitation: 1:50 - 1:200
Molecular Weight:	100kDa
Purification:	Aff. Pur.
Synonyms:	CMT2A;CMT2A2;CMT2A2A;CMT2A2B;CPRP1;HMSN6A;HSG; MARF;MFN2;Mitofusin 2
Background:	This gene encodes a mitochondrial membrane protein that participates in mitochondrial fusion and contributes to the maintenance and operation of the mitochondrial network. This protein is involved in the regulation of vascular smooth muscle cell proliferation, and it may play a role in the pathophysiology of obesity. Mutations in this gene cause Charcot-Marie-Tooth disease type 2A2, and hereditary motor and sensory neuropathy VI, which are both disorders of the peripheral nervous system. Defects in this gene have also been associated with early-onset stroke. Two transcript variants encoding the same protein have been identified.
Form:	Liquid
Buffer:	PBS with 0.02% sodium azide, 50% glycerol, pH7.3.
Storage:	Store at -20°C. Avoid freeze / thaw cycles.



Western blot analysis of extracts of various cell lines, using Mitofusin 2 antibody at 1:1000 dilution. Secondary antibody: HRP Goat Anti-Rabbit IgG (H+L) at 1:10000 dilution.

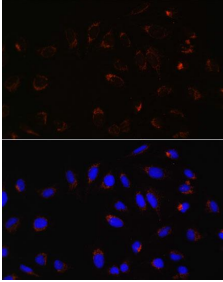


Immunohistochemistry of paraffin embedded Rat kidney using Mitofusin 2 Rabbit mAb at dilution of 1:100 (40x lens).



Immunohistochemistry of paraffin embedded Human colon using Mitofusin 2 Rabbit mAb at dilution of 1:100 (40x lens).

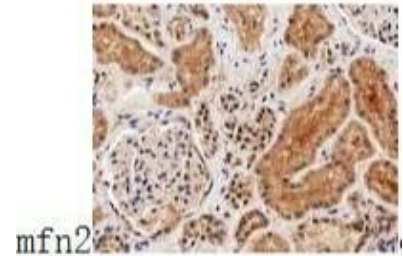
Lysates/proteins: 25ug per lane.
Blocking buffer: 3% nonfat dry milk in
TBST.
Detection: ECL West Pico Plus.
Exposure time: 90s.



Immunofluorescence analysis of U-2 OS cells using MFN2 antibody at dilution of 1:100. Blue: DAPI for nuclear staining.



Review for Mitofusin 2 Rabbit mAb
Experiment Type Western blot (WB)
Sample Human bone marrow cancer cell



Review for Mitofusin 2 Rabbit mAb
Experiment Type Immunohistochemistry (IHC) Sample Human bone marrow cancer cell Description Immunohistochemistry of paraffin-embedded Human bone marrow cancer cell by using antibody at dilution of 1:100

References

References

References for Mitofusin 2 Rabbit mAb

Journal:International Journal of Biological Sciences

Application:WB IF:4.06

Species:Rattus norvegicus

PMID:31754334

Title: MiR-93 regulates vascular smooth muscle cell proliferation, and neointimal formation through targeting Mfn2

**For Research use only
IMMUNOLOGICAL SCIENCES**