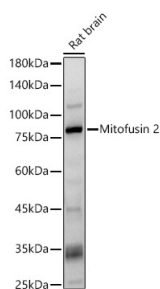
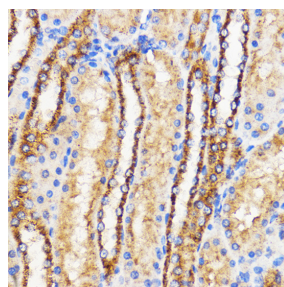


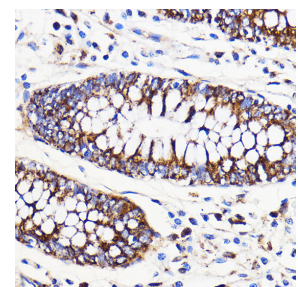
Cat. No:	AB-82792
Size:	100 ug
Clone:	POLY
Concentration:	1mg/ml
Host:	Rabbit
Isotype:	IgG
Immunogen:	A synthetic peptide corresponding to a sequence within amino acids 500-600 of human Mitofusin 2
Reactivity:	Human, Mouse, Rat
Applications:	Western Blot 1:100 - 1:500 Immunohistochemistry(P) 1:50 - 1:200 Immunofluorescence 1:50 - 1:200 Immunocytochemistry 1:50 - 1:200
Molecular Weight:	80 kDa
Purification:	Aff. Pur.
Synonyms:	HSG; MARF; CMT2A; CPRP1; CMT2A2; HMSN6A; CMT2A2A; CMT2A2B
Background:	This gene encodes a mitochondrial membrane protein that participates in mitochondrial fusion and contributes to the maintenance and operation of the mitochondrial network. This protein is involved in the regulation of vascular smooth muscle cell proliferation, and it may play a role in the pathophysiology of obesity. Mutations in this gene cause Charcot-Marie-Tooth disease type 2A2, and hereditary motor and sensory neuropathy VI, which are both disorders of the peripheral nervous system. Defects in this gene have also been associated with early-onset stroke. Two transcript variants encoding the same protein have been identified.
Form:	Liquid
Buffer:	PBS with 0.05% proclin300,50% glycerol, pH7.3
Storage:	Store at -20°C. Avoid freeze / thaw cycles.



Western blot analysis of Rat brain, using Mitofusin 2 antibody at 1:400 dilution. Secondary antibody: HRP Goat Anti-Rabbit IgG (H+L) at 1:10000 dilution. Lysates/proteins: 25µg per lane. Blocking buffer: 3% nonfat dry milk in TBST. Detection: ECL Basic Kit.



Immunohistochemistry analysis of paraffin-embedded Rat kidney using Mitofusin 2 Rabbit pAb at dilution of 1:100 (40x lens). Perform microwave antigen retrieval with 10 mM PBS buffer pH 7.2 before commencing with IHC staining

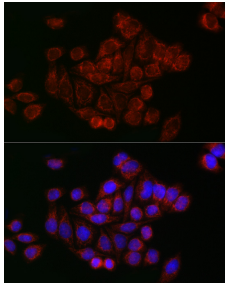


Immunohistochemistry analysis of paraffin-embedded Human colon using Mitofusin 2 Rabbit pAb (A12771) at dilution of 1:100 (40x lens). Perform microwave antigen retrieval with 10 mM PBS buffer pH 7.2 before commencing with IHC staining

Exposure time: 30s.

protocol.

protocol.



Immunofluorescence analysis of HeLa cells using Mitofusin 2 Rabbit pAb at dilution of 1:50 (40x lens). Blue: DAPI for nuclear staining.

**For Research use only
IMMUNOLOGICAL SCIENCES**