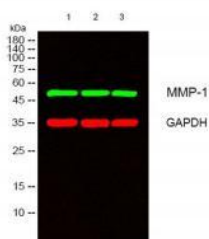
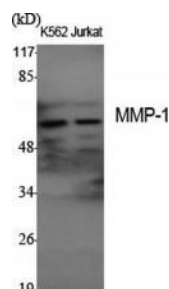


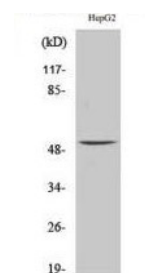
Cat. No:	AB-84794
Conjugate:	Unconjugated
Size:	100 ug
Clone:	POLY
Concentration:	1mg/ml
Host:	Rabbit
Isotype:	IgG
Immunogen:	The antiserum was produced against synthesized peptide derived from human MMP-1. AA range:411-460
Reactivity:	Human, Mouse, Rat
Applications:	Western Blot: 1/500 - 1/2000. Immunohistochemistry: 1/100 - 1/300. Immunofluorescence: 1/200 - 1/1000
Molecular Weight:	54kD
Purification:	The antibody was affinity-purified from rabbit antiserum by affinity-chromatography using epitope-specific immunogen.
Synonyms:	MMP1; CLG; Interstitial collagenase; Fibroblast collagenase; Matrix metalloproteinase-1; MMP-1 matrix metalloproteinase 1(MMP1) Homo sapiens
Background:	This gene encodes a member of the peptidase M10 family of matrix metalloproteinases (MMPs). Proteins in this family are involved in the breakdown of extracellular matrix in normal physiological processes, such as embryonic development, reproduction, and tissue remodeling, as well as in disease processes, such as arthritis and metastasis. The encoded preproprotein is proteolytically processed to generate the mature protease. This secreted protease breaks down the interstitial collagens, including types I, II, and III. The gene is part of a cluster of MMP genes on chromosome 11. Mutations in this gene are associated with chronic obstructive pulmonary disease (COPD). Alternative splicing results in multiple transcript variants, at least one of which encodes an isoform that is proteolytically processed.
Form:	Liquid
Buffer:	Liquid in PBS containing 50% glycerol, 0.5% BSA and 0.02% sodium azide.
Storage:	Store at -20°C. Avoid repeated freeze-thaw cycles.



Western blot analysis of lysates from 1)



Western Blot analysis of various cells



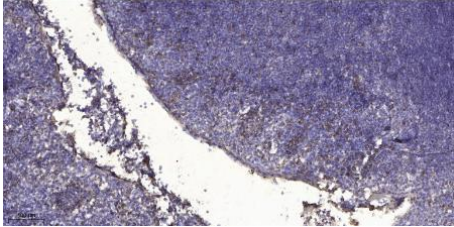
Western Blot analysis of HepG2 cells

K562, 2) Jurkat, 3) HeLa cells, Green
primary antibody was diluted at
1:1000, 4° overnight, secondary
antibody was diluted at 1:10000, 37°
1 hour.

Red GAPDH Monoclonal Antibody(2B8)

using MMP-1 Polyclonal Antibody diluted
at 1:1000

using MMP-1 Polyclonal Antibody diluted
at 1:1000



Immunohistochemical analysis of
paraffin-embedded human tonsil.

- 1, Antibody was diluted at 1:200(4°
overnight).
- 2, Tris-EDTA,pH9.0 was used for antigen
retrieval.
- 3,Secondary antibody was diluted at
1:200(room temperature, 30min).