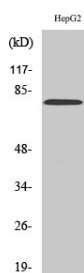
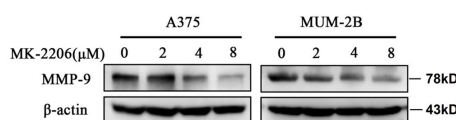


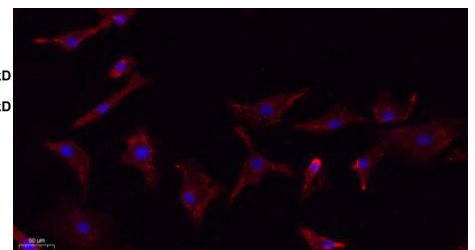
Cat. No:	AB-83613
Conjugate:	Unconjugated
Size:	100 ug
Clone:	POLY
Concentration:	1mg/ml
Host:	Rabbit
Isotype:	IgG
Immunogen:	The antiserum was produced against synthesized peptide derived from human MMP-9. AA range:651-700
Reactivity:	Human, Mouse, Rat
Applications:	Western Blot: 1/500 - 1/2000 Immunohistochemistry(paraffin-embedded tissues): 1:100-300 Immunofluorescence: 1:100-300 ELISA: 1/20000
Molecular Weight:	78kD
Purification:	The antibody was affinity-purified from rabbit antiserum by affinity-chromatography using epitope-specific immunogen.
Synonyms:	MMP9; CLG4B; Matrix metalloproteinase-9; MMP-9; 92 kDa gelatinase; 92 kDa type IV collagenase; Gelatinase B; GELB
Background:	matrix metalloproteinase 9(MMP9) Homo sapiens embryonic development, reproduction, and tissue remodeling, as well as in disease processes, such as arthritis and metastasis. Most MMP's are secreted as inactive proproteins which are activated when cleaved by extracellular proteinases. The enzyme encoded by this gene degrades type IV and V collagens. Studies in rhesus monkeys suggest that the enzyme is involved in IL-8-induced mobilization of hematopoietic progenitor cells from bone marrow, and murine studies suggest a role in tumor-associated tissue remodeling. Proteins of the matrix metalloproteinase (MMP) family are involved in the breakdown of extracellular matrix in normal physiological processes, such as
Form:	Liquid
Buffer:	Liquid in PBS containing 50% glycerol, 0.5% BSA and 0.02% sodium azide.
Storage:	Store at -20°C. Avoid repeated freeze-thaw cycles.



Western Blot analysis of HepG2 cells using MMP-9 Polyclonal Antibody diluted



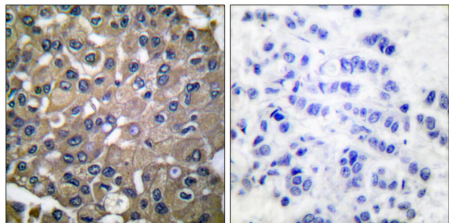
Review:
Experiment Type Western blot (WB)
Sample Human cells
Description Western blot analysis of extracts of Human cells, using MMP9 Polyclonal Antibody.



Immunofluorescence analysis of A549. 1, primary Antibody(red) was diluted at 1:200(4°C overnight). 2, Goat Anti Rabbit IgG (H&L) - Alexa

at 1:1000

Fluor 594 Secondary antibody was
diluted at 1:1000(room temperature,
50min).
3, Picture B: DAPI(blue) 10min.



Immunohistochemistry analysis of
paraffin-embedded human breast
carcinoma tissue, using MMP-9 Antibody.
The picture on the right is blocked with
the synthesized peptide.

**For Research use only
IMMUNOLOGICAL SCIENCES**