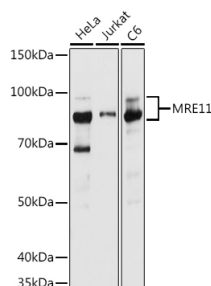


Cat. No:	AB-84200
Conjugate:	Unconjugated
Size:	100ug
Clone:	POLY
Concentration:	1mg/ml
Host:	Rabbit
Isotype:	IgG
Immunogen:	Recombinant fusion protein containing a sequence corresponding to amino acids 290-485 of human MRE11
Reactivity:	Human, Rat
Applications:	Western Blot: 1:500 - 1:1000 Immunoprecipitation: 1:500 - 1:1000
Molecular Weight:	81KDa
Purification:	Affinity purification
Synonyms:	MRE11;ATLD;HNGS1;MRE11A;MRE11B

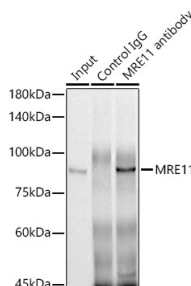
Background:

This gene encodes a nuclear protein involved in homologous recombination, telomere length maintenance, and DNA double-strand break repair. By itself, the protein has 3' to 5' exonuclease activity and endonuclease activity. The protein forms a complex with the RAD50 homolog; this complex is required for nonhomologous joining of DNA ends and possesses increased single-stranded DNA endonuclease and 3' to 5' exonuclease activities. In conjunction with a DNA ligase, this protein promotes the joining of noncomplementary ends in vitro using short homologies near the ends of the DNA fragments. This gene has a pseudogene on chromosome 3. Alternative splicing of this gene results in two transcript variants encoding different isoforms.

Form:	Liquid
Buffer:	PBS with 0.01% thiomersal, 50% glycerol, pH 7.3.
Storage:	Store at -20°C. Avoid freeze / thaw cycles.



Western blot analysis of extracts of various cell lines, using MRE11 antibody at 1:1000 dilution.
Secondary antibody: HRP Goat Anti-Rabbit IgG (H+L) at 1:10000 dilution.
Lysates/proteins: 25ug per lane.



Immunoprecipitation analysis of 300ug extracts of HeLa cells using 3ug MRE11 antibody.
Western blot was performed from the immunoprecipitate using MRE11 antibody at a

Blocking buffer: 3% nonfat dry milk in
TBST.

Detection: ECL West Pico Plus.
Exposure time: 5s.

dilution of 1:1000.

**For Research use only
IMMUNOLOGICAL SCIENCES**