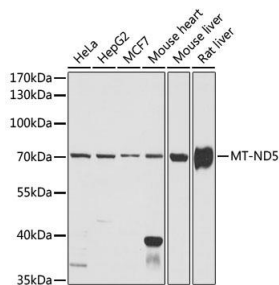


| | |
|--------------------------|---|
| Cat. No: | AB-84288 |
| Size: | 100 ug |
| Clone: | POLY |
| Concentration: | 1mg/ml |
| Host: | Rb |
| Isotype: | IgG |
| Immunogen: | A synthetic peptide corresponding to a sequence within amino acids 510 to the C-terminus of human MT-ND5. |
| Reactivity: | Hu, Ms, Rt |
| Applications: | Western Blot: 1:500 - 1:2000 Immunohistochemistry: 1:50 - 1:200 |
| Molecular Weight: | 67kDa |
| Synonyms: | MTND5;MT-ND5 |
| Form: | Liquid |
| Buffer: | PBS with 0.02% sodium azide, 50% glycerol, pH7.3. |
| Storage: | Store at -20°C. Avoid freeze / thaw cycles. |

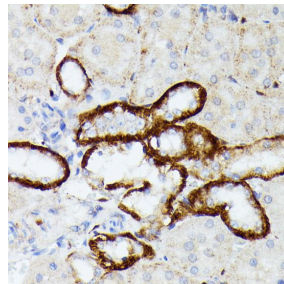


Western blot analysis of extracts of various cell lines, using MT-ND5 antibody at 1:1000 dilution.

Secondary antibody: HRP Goat Anti-Rabbit IgG (H+L) at 1:10000 dilution.
Lysates/proteins: 25ug per lane.

Blocking buffer: 3% nonfat dry milk in TBST.

Detection: ECL West Pico Plus.
Exposure time: 3min.



Immunohistochemistry of paraffin embedded rat kidney using MT-ND5 antibody at dilution of 1:100 (40x lens).

**For Research use only
IMMUNOLOGICAL SCIENCES**