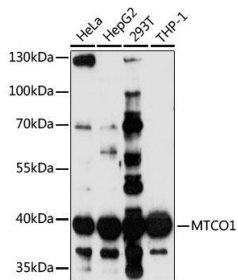
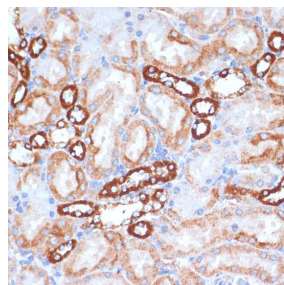


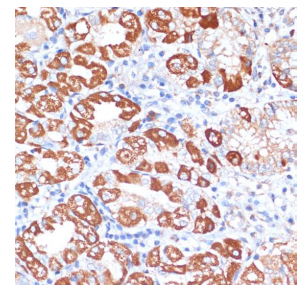
Cat. No:	MAB-94611
Conjugate:	Unconjugated
Size:	100 ug
Clone:	1D6E1A8
Concentration:	1mg/ml
Host:	Rb
Isotype:	IgG
Immunogen:	Recombinant protein of human MTCO1.
Reactivity:	Hu, Ms, Rt
Applications:	Western Blot: 1:500 - 1:2000 Immunohistochemistry: 1:50 - 1:100 Immunofluorescence: 1:50 - 1:100
Molecular Weight:	40kDa
Purification:	Aff. Pur.
Synonyms:	COI;MTCO1;COX1;MT-CO1
Form:	Liquid
Buffer:	PBS with 0.02% sodium azide,50% glycerol,pH7.3.
Storage:	Store at -20°C. Avoid freeze / thaw cycles.



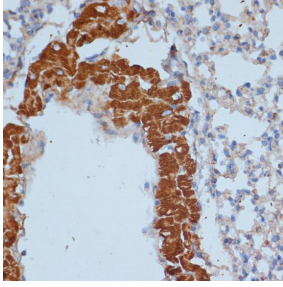
Western blot analysis of extracts of various cell lines, using MTCO1 antibody 1:1000 dilution .Secondary antibody: HRP Goat Anti-Rabbit IgG (H+L) at 1:10000 dilution.Lysates/proteins: 25ug per lane.Blocking buffer: 3% nonfat dry milk in TBST.
Detection: ECL Enhanced Kit
Exposure time: 15s.



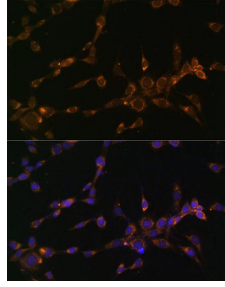
Immunohistochemistry of paraffin embedded rat kidney using MTCO1 antibody at dilution of 1:100 (40x lens).



Immunohistochemistry of paraffin embedded human stomach using MTCO1 antibody at dilution of 1:100 (40x lens).



Immunohistochemistry of paraffin
Embedded mouse lung using MTCO1
antibody at dilution of 1:100
(40x lens).



Immunofluorescence analysis of NIH-3T3
cells using MTCO1 Monoclonal Antibody
at dilution of 1:100 (40x lens).
Blue: DAPI for nuclear staining.

**For Research use only
IMMUNOLOGICAL SCIENCES**