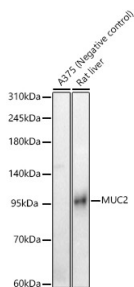


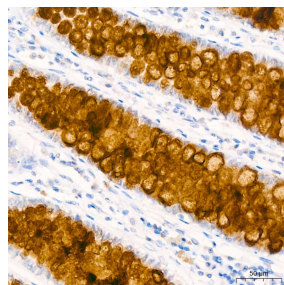
Cat. No:	AB-82668
Conjugate:	Unconjugated
Size:	100µg
Clone:	POLY
Concentration:	1mg/ml
Host:	Rabbit
Isotype:	IgG
Immunogen:	Recombinant fusion protein containing a sequence corresponding to amino acids 850-1270 of human MUC2.
Reactivity:	Human, Mouse, Rat
Applications:	Western Blot: 1:500 - 1:1000 Immunohistochemistry (paraffin-embedded tissues): 1:500 - 1:1000 Immunofluorescence: 1:50 - 1:200 Immunocytochemistry: 1:50 - 1:200
Molecular Weight:	110 kDa
Purification:	Affinity purification
Synonyms:	MLP; SMUC; MUC-2; MUC2

Background: This gene encodes a member of the mucin protein family. Mucins are high molecular weight glycoproteins produced by many epithelial tissues. The protein encoded by this gene is secreted and forms an insoluble mucous barrier that protects the gut lumen. The protein polymerizes into a gel of which 80% is composed of oligosaccharide side chains by weight. The protein features a central domain containing tandem repeats rich in threonine and proline that varies between 50 and 115 copies in different individuals. Downregulation of this gene has been observed in patients with Crohn disease and ulcerative colitis.

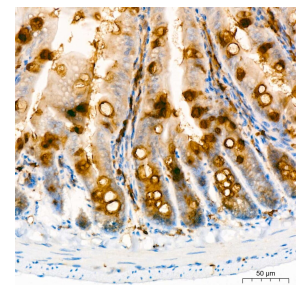
Form:	Liquid
Buffer:	PBS with 0.05% proclin300, 50% glycerol, pH 7.3.
Storage:	Store at -20°C. Avoid freeze / thaw cycles.



Western blot analysis of various lysates, using MUC2 Rabbit pAb at 1:1000 dilution.
Secondary antibody: HRP Goat Anti-Rabbit IgG (H+L) at 1:10000 dilution.
Lysates/proteins: 25ug per lane.
Blocking buffer: 3% nonfat dry milk in

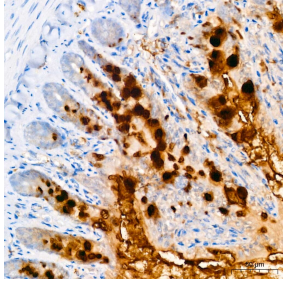


Immunohistochemistry analysis of paraffin-embedded human colon carcinoma using MUC2 Rabbit pAb at dilution of 1:1000 (40x lens). Perform high pressure antigen retrieval with 10 mM Tris/EDTA buffer pH 9.0 before commencing with IHC staining



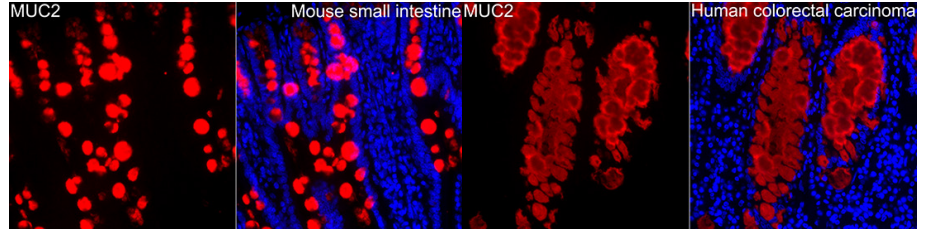
Immunohistochemistry analysis of paraffin-embedded mouse intestine using MUC2 Rabbit pAb at dilution of 1:1000 (40x lens). Perform high pressure antigen retrieval with 10 mM Tris/EDTA buffer pH 9.0 before commencing with IHC staining protocol.

TBST.
Detection: ECL West Pico Plus.
Exposure time: 180s.



Immunohistochemistry analysis of paraffin-embedded rat colon using MUC2 Rabbit pAb at dilution of 1:1000 (40x lens). Perform high pressure antigen retrieval with 10 mM Tris/EDTA buffer pH 9.0 before commencing with IHC staining protocol.

protocol.



Immunofluorescence analysis of Mouse small intestine using MUC2 Rabbit pAb at a dilution of 1:200 (40x lens).
Secondary antibody: Cy3 Goat Anti-Rabbit IgG (H+L) at 1:500 dilution. Blue: DAPI for nuclear staining. Perform high pressure antigen retrieval with 0.01 M citrate buffer (pH 6.0) prior to IF staining.

Immunofluorescence analysis of Human colorectal carcinoma using MUC2 Rabbit pAb at a dilution of 1:200 (40x lens).
Secondary antibody: Cy3 Goat Anti-Rabbit IgG (H+L) at 1:500 dilution. Blue: DAPI for nuclear staining. Perform high pressure antigen retrieval with 0.01 M citrate buffer (pH 6.0) prior to IF staining.

**For Research use only
IMMUNOLOGICAL SCIENCES**