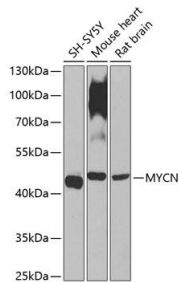
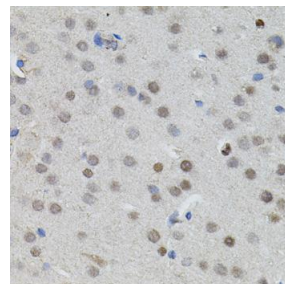


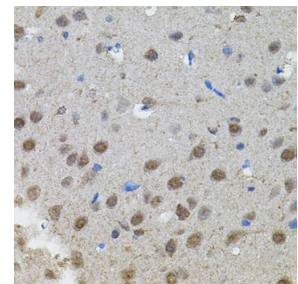
<b>Cat. No:</b>	AB-84269
<b>Size:</b>	100µg
<b>Clone:</b>	POLY
<b>Concentration:</b>	1mg/ml
<b>Host:</b>	Rb
<b>Isotype:</b>	IgG
<b>Immunogen:</b>	Recombinant fusion protein containing a sequence corresponding to amino acids 168-267 of human MYCN
<b>Reactivity:</b>	Hu, Ms, Rt
<b>Applications:</b>	Western Blot: 1:500 - 1:2000 Immunohistochemistry: 1:50 - 1:200
<b>Molecular Weight:</b>	49kDa
<b>Purification:</b>	Aff. Pur.
<b>Synonyms:</b>	MODED;N-myc;NMYC;ODED;bHLHe37;MYCN
<b>Background:</b>	This gene is a member of the MYC family and encodes a protein with a basic helixloop-helix (bHLH) domain. This protein is located in the nucleus and must dimerize with another bHLH protein in order to bind DNA. Amplification of this gene is associated with a variety of tumors, most notably neuroblastomas. Multiple alternatively spliced transcript variants encoding different isoforms have been found for this gene.
<b>Form:</b>	Liquid
<b>Buffer:</b>	PBS with 0.02% sodium azide,50% glycerol,pH7.3.
<b>Storage:</b>	Store at -20°C. Avoid freeze / thaw cycles.



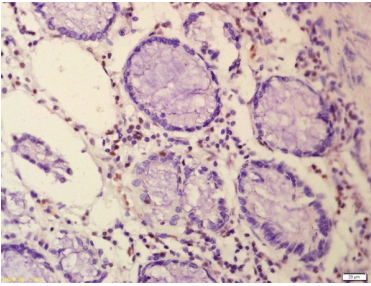
Western blot analysis of extracts of various cell lines, using MYCN antibody at 1:1000 dilution.  
Secondary antibody: HRP Goat Anti-Rabbit IgG (H+L) at 1:10000 dilution.  
Lysates/proteins: 25ug per lane.  
Blocking buffer: 3% nonfat dry milk in TBST.  
Detection: ECL West Pico Plus.  
Exposure time: 90s.



Immunohistochemistry of paraffin embedded mouse brain using MYCN antibody (40x lens).



Immunohistochemistry of paraffin embedded rat brain using MYCN antibody (40x lens).



Formalin-fixed and paraffin embedded human colon carcinoma labeled with Anti-n-Myc Polyclonal Antibody, Unconjugated at 1:200 followed by conjugation to the secondary antibody and DAB staining.

**For Research use only  
IMMUNOLOGICAL SCIENCES**