

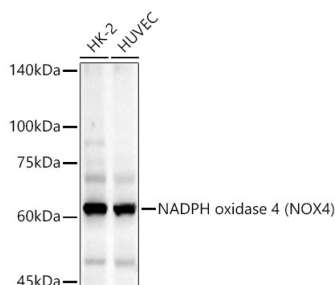


Cat. No: MAB-94797
Conjugate: Unconjugated
Size: 100 ug
Clone: ARC55045
Concentration: 1mg/ml
Host: Rabbit
Isotype: IgG
Reactivity: Human, Mouse, Rat
 Western Blot: 1:500 - 1:1000
 Immunohistochemistry
Applications: Paraffin Embedded Tissues: 1:50 - 1:200
 Immunofluorescence: 1:50 - 1:200
 Immunocytochemistry: 1:50 - 1:200

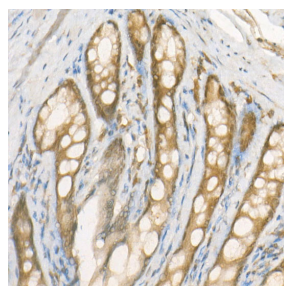
Molecular Weight: 62 kDa
Purification: Affinity purification
Synonyms: KOX; KOX-1; RENOX; NADPH oxidase 4 (NOX4)

Background: This gene encodes a member of the NOX-family of enzymes that functions as the catalytic subunit the NADPH oxidase complex. The encoded protein is localized to nonphagocytic cells where it acts as an oxygen sensor and catalyzes the reduction of molecular oxygen to various reactive oxygen species (ROS). The ROS generated by this protein have been implicated in numerous biological functions including signal transduction, cell differentiation and tumor cell growth. A pseudogene has been identified on the other arm of chromosome 11. Alternative splicing results in multiple transcript variants.

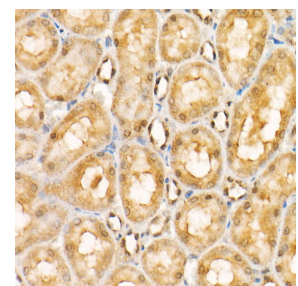
Form: Liquid
Buffer: PBS with 0.05% proclin300,0.05% BSA,50% glycerol,pH7.3.
Storage: Store at -20°C. Avoid freeze / thaw cycles.



Western blot analysis of extracts of various lysates, using NADPH oxidase 4 (NOX4) Rabbit mAb at 1:1000 dilution.
 Secondary antibody: HRP Goat Anti-Rabbit IgG (H+L) at 1:10000 dilution.
 Lysates/proteins: 25µg per lane.
 Blocking buffer: 3% nonfat dry milk in TBST.

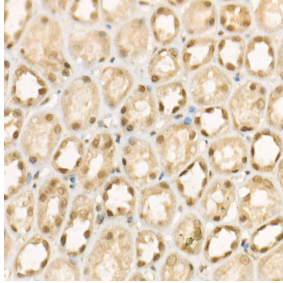


Immunohistochemistry analysis of paraffin-embedded Mouse colon using NADPH oxidase 4 (NOX4) antibody at dilution of 1:200(40x lens).Perform high pressure antigen retrieval with 10 mM citrate buffer pH 6.0 before commencing with IHC staining protocol.

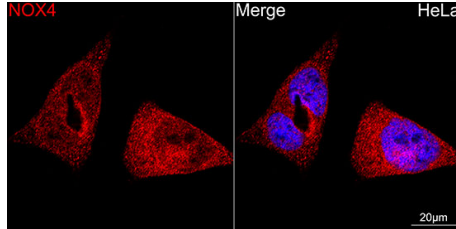


Immunohistochemistry analysis of paraffin-embedded Rat kidney using NADPH oxidase 4 (NOX4) antibody at dilution of 1:200(40x lens).Perform high pressure antigen retrieval with 10 mM citrate buffer pH 6.0 before commencing with IHC staining protocol.

Detection: ECL West Pico Plus.
Exposure time: 90s.



Immunohistochemistry analysis of paraffin-embedded Human kidney using NADPH oxidase 4 (NOX4) antibody at dilution of 1:200(40x lens). Perform high pressure antigen retrieval with 10 mM citrate buffer pH 6.0 before commencing with IHC staining protocol.



Confocal imaging of HeLa cells using NADPH oxidase 4 (NOX4) Rabbit mAb dilution 1:100) (Red). DAPI was used for nuclear staining (blue). Objective: 60x.

**For Research use only
IMMUNOLOGICAL SCIENCES**