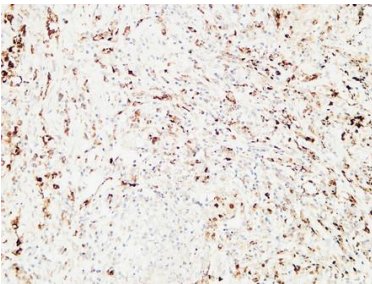
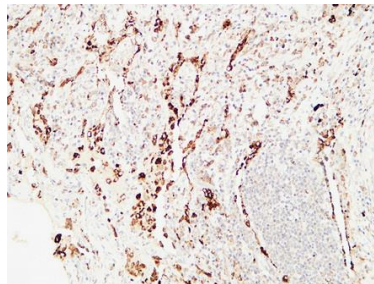


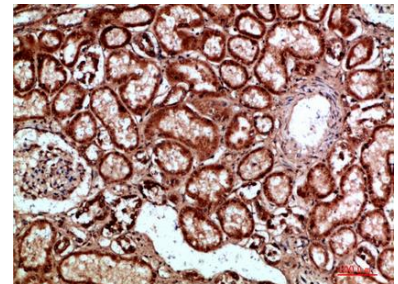
<b>Cat. No:</b>	AB-84405
<b>Size:</b>	100ug
<b>Clone:</b>	POLY
<b>Concentration:</b>	1mg/ml
<b>Host:</b>	Rb
<b>Isotype:</b>	IgG
<b>Immunogen:</b>	Synthetic peptide from human protein at AA range 191-240
<b>Reactivity:</b>	Hu
<b>Applications:</b>	Immunohistochemistry: 1:50-1:200 ELISA: 1:10000-1:20000
<b>Purification:</b>	The antibody was affinity-purified from rabbit serum by affinity chromatography using specific immunogen.
<b>Synonyms:</b>	Napsin-A (EC 3.4.23.-) (Aspartyl protease 4) (ASP4) (Asp 4) (Napsin-1) (TA01/TA02)
<b>Form:</b>	Liquid
<b>Buffer:</b>	PBS, pH 7.4, containing 0.02% sodium azide as Preservative and 50% Glycerol.
<b>Storage:</b>	Store at -20°C or -80°C. Avoid repeated freeze / thaw cycles.



Immunohistochemical analysis of paraffin-embedded Human lung. 1, Antibody was diluted at 1:400 (4°C overnight). 2, High pressure and temperature EDTA, pH8.0 was used for antigen retrieval. 3, Secondary antibody was diluted at 1:200 (room temperature, 30min).



Immunohistochemical analysis of paraffin-embedded Human lung. 1, Antibody was diluted at 1:400 (4°C overnight). 2, High pressure and temperature EDTA, pH8.0 was used for antigen retrieval. 3, Secondary antibody was diluted at 1:200 (room temperature, 30min).



Immunohistochemical analysis of paraffin-embedded human kidney, antibody was diluted at 1:200

**For Research use only  
IMMUNOLOGICAL SCIENCES**