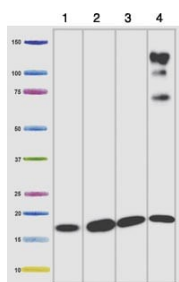


<b>Cat. No:</b>	MAB-94615
<b>Size:</b>	100ug
<b>Clone:</b>	20E9DH10C12
<b>Concentration:</b>	1mg/ml
<b>Host:</b>	Rb
<b>Isotype:</b>	IgG
<b>Immunogen:</b>	Synthesized peptide derived from human NDUB8 protein.
<b>Reactivity:</b>	Hu, Ms
<b>Applications:</b>	Western Blot: 1:500-2000 ELISA: 1:5000-20000
<b>Molecular Weight:</b>	20kDa
<b>Purification:</b>	NDUB8 antibody was affinity-purified from rabbit antiserum by affinitychromatography using epitope-specific immunogen.
<b>Synonyms:</b>	Anti-Nadh Dehydrogenase [Ubiquinone] 1 Beta Subcomplex Subunit 8- Mitochondrial antibodyAnti-Complex I-Ashi antibodyAnti-Ci-AshiantibodyAnti-Nadh-Ubiquinone Oxidoreductase Ashi Subunit antibodyAnti-NDUFB8 antibody
<b>Background:</b>	Specificity: NDUB8 Monoclonal antibody detects endogenous levels of protein.
<b>Form:</b>	Liquid
<b>Buffer:</b>	Liquid in PBS containing 50% glycerol, and 0.02% sodium azide.
<b>Storage:</b>	Store at-20°C, and avoid repeat freeze-thaw cycles.



All lanes : Anti-NDUFB8 antibody  
[20E9DH10C12] at 0.5 µg/ml  
Lane 1 : Isolated mitochondria from  
Human heart at 5 µg  
Lane 2 : Isolated mitochondria from cow  
heart at 1 µg  
Lane 3 : Isolated mitochondria from rat  
heart at 10 µg  
Lane 4 : Isolated mitochondria from  
mouse heart at 10 µg

**For Research use only  
IMMUNOLOGICAL SCIENCES**