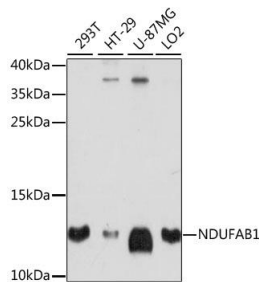
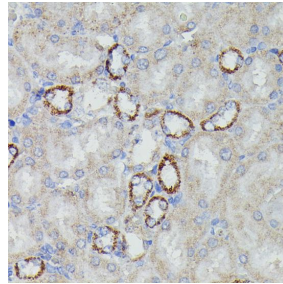


<b>Cat. No:</b>	AB-84350
<b>Size:</b>	100ug
<b>Clone:</b>	POLY
<b>Concentration:</b>	1mg/ml
<b>Host:</b>	Rb
<b>Isotype:</b>	IgG
<b>Immunogen:</b>	A synthetic peptide corresponding to a sequence within amino acids 50-150 of human NDUFAB1.
<b>Reactivity:</b>	Hu, Ms, Rt
<b>Applications:</b>	Western Blot: 1:500 - 1:2000 Immunohistochemistry: 1:50 - 1:200
<b>Molecular Weight:</b>	13kDa
<b>Purification:</b>	Aff. Pur.
<b>Synonyms:</b>	NDUFAB1;ACP;ACP1;FASN2A;SDAP
<b>Form:</b>	Liquid
<b>Buffer:</b>	Liquid in PBS containing 50% glycerol, and 0.02% sodium azide.
<b>Storage:</b>	Store at -20°C, and avoid repeat freeze-thaw cycles.



Western blot analysis of extracts of various cell lines, using NDUFAB1 antibody at 1:1000 dilution.  
Secondary antibody: HRP Goat Anti-Rabbit IgG (H+L) (AS014) at 1:10000 dilution.  
Lysates/proteins: 25ug per lane.  
Blocking buffer: 3% nonfat dry milk in TBST.  
Detection: ECL West Pico Plus.  
Exposure time: 90s.



Immunohistochemistry of paraffin embedded rat kidney using NDUFAB1 antibody at dilution of 1:100 (40x lens).

**For Research use only  
IMMUNOLOGICAL SCIENCES**