

Cat. No: AB-84781

Conjugate: Unconjugated

Size: 100 ug

Clone: POLY

Concentration: 1mg/ml

Host: Rabbit

Isotype: IgG

Immunogen: nestin

Applications: Western Blot: 1:500-1:2000
Immunohistochemistry: 1:500-1:200
Immunofluorescence: 1:20-1:200

Molecular Weight: 170 kDa

Purification: Immunogen affinity purified

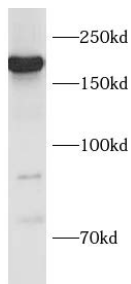
Synonyms: NES, Nestin

Background: Nestin, also named as NES and Nbla00170, is a class VI intermediate filament protein expressed in stem cells of the central nervous system(CNS) but not in mature CNS cells. Its expression is used extensively as a marker for neural lineage cells derived from human embryonic stem(hES) and induced pluripotent stem(iPS) cells. Nestin is also expressed in non-neural stem cell populations such as pancreatic islet progenitors and hematopoietic progenitors.

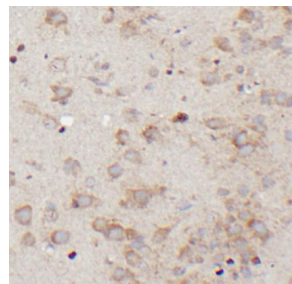
Form: Liquid

Buffer: PBS with 0.02% sodium azide and 50% glycerol pH 7.3

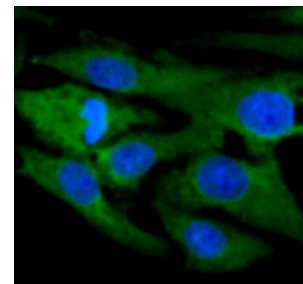
Storage: Store at -20°C for 12 months (Avoid repeated freeze / thaw cycles.)



MCF7 cells were subjected to SDS PAGE followed by western blot with NES antibody at dilution of 1:1000



Immunohistochemistry of paraffin-embedded mouse brain using NES antibody at dilution of 1:50



Immunofluorescent analysis of SH-SY5Y cells using NES antibody at dilution of 1:50.

**For Research use only
IMMUNOLOGICAL SCIENCES**