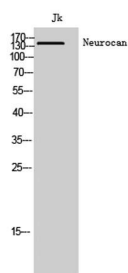
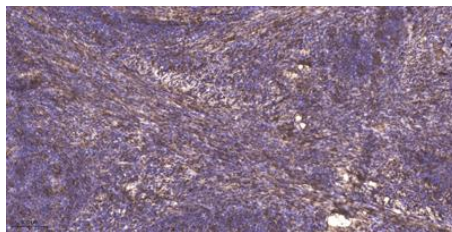


<b>Cat. No:</b>	AB-J10996
<b>Conjugate:</b>	Unconjugated
<b>Size:</b>	100 ug
<b>Clone:</b>	POLY
<b>Concentration:</b>	1mg/ml
<b>Host:</b>	Rabbit
<b>Isotype:</b>	IgG
<b>Immunogen:</b>	Synthesized peptide derived from Neurocan . at AA range: 370-450
<b>Reactivity:</b>	Human;Rat;Mouse
<b>Applications:</b>	Western Blot: 1:500-2000 Immunohistochemistry (paraffin-embedded tissues): 1:50-300
<b>Molecular Weight:</b>	145kD
<b>Purification:</b>	The antibody was affinity-purified from rabbit antiserum by affinity-chromatography using epitope-specific immunogen.
<b>Synonyms:</b>	NCAN; CSPG3; NEUR; Neurocan core protein; Chondroitin sulfate proteoglycan 3
<b>Background:</b>	Neurocan is a chondroitin sulfate proteoglycan thought to be involved in the modulation of cell adhesion and migration.
<b>Form:</b>	Liquid
<b>Buffer:</b>	Liquid in PBS containing 50% glycerol, 0.5% BSA and 0.02% sodium azide.
<b>Storage:</b>	Store at -20°C. Avoid repeated freeze-thaw cycles.



Western Blot analysis of Jk cells using  
Neurocan Polyclonal Antibody



Immunohistochemical analysis of  
paraffin-embedded human cervical  
carcinoma. 1, Antibody was diluted at  
1:200(4° overnight). 2, Tris-EDTA,pH9.0  
was used for  
antigen retrieval. 3,Secondary antibody  
was diluted at 1:200(room temperature,  
45min).

**For Research use only  
IMMUNOLOGICAL SCIENCES**