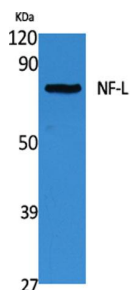
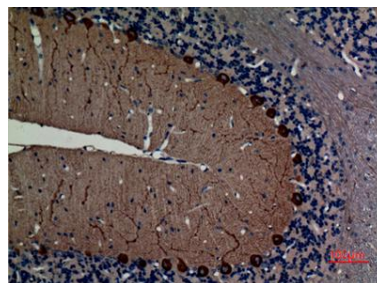


Cat. No:	AB-84805
Conjugate:	Unconjugated
Size:	100 ug
Clone:	POLY
Concentration:	1mg/ml
Host:	Rabbit
Isotype:	IgG
Immunogen:	Synthesized peptide derived from the C-terminal region of human NF-L.
Reactivity:	Human, Mouse, Rat
Applications:	Western Blot: 1/500 - 1/2000 Immunohistochemistry (paraffin embedded tissues): 1:100-300
Molecular Weight:	61kD
Purification:	Store at -20°C. Avoid repeated freeze-thaw cycles.
Synonyms:	NEFL; NF68; NFL; Neurofilament light polypeptide; NF-L; 68 kDa neurofilament protein; Neurofilament triplet L protein.
Background:	Neurofilaments are type IV intermediate filament heteropolymers composed of light, medium, and heavy chains. Neurofilaments comprise the axoskeleton and they functionally maintain the neuronal caliber. They may also play a role in intracellular transport to axons and dendrites. This gene encodes the light chain neurofilament protein. Mutations in this gene cause Charcot-Marie-Tooth disease types 1F (CMT1F) and 2E (CMT2E), disorders of the peripheral nervous system that are characterized by distinct neuropathies. A pseudogene has been identified on chromosome Y.
Form:	Liquid
Buffer:	Liquid in PBS containing 50% glycerol, 0.5% BSA and 0.02% sodium azide.
Storage:	Store at -20°C. Avoid repeated freeze-thaw cycles.



Western Blot analysis of extracts from Jurkat cells, using NF-L Polyclonal Antibody. Secondary antibody was diluted at 1:20000



Immunohistochemical analysis of paraffin-embedded rat-brain, antibody was diluted at 1:100.

**For Research use only
IMMUNOLOGICAL SCIENCES**