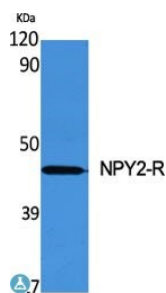
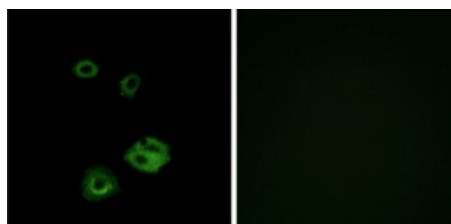


Cat. No:	AB-84232
Conjugate:	Unconjugated
Size:	100 ug
Clone:	POLY
Concentration:	1mg/ml
Host:	Rb
Isotype:	IgG
Immunogen:	Synthesized peptide derived from human NPY2-R
Reactivity:	Hu, Ms, Rt
Applications:	Western Blot: 1:500-1:2000 Immunofluorescence: 1:200-1:1000 ELISA: 1:5000
Molecular Weight:	43kDa
Purification:	The antibody was affinity-purified from rabbit antiserum by affinity chromatography using epitope-specific immunogen.
Synonyms:	Neuropeptide Y receptor type 2 NPY2-R NPY-Y2 receptor Y2 receptor
Background:	Receptor for neuropeptide Y and peptide YY. The rank order of affinity of this receptor for pancreatic polypeptides is PYY > NPY > PYY (3-36) > NPY (2-36) > [Ile-31, Gln-34] PP > [Leu-31, Pro-34] NPY > PP, [Pro-34] PYY and NPY free acid.
Form:	Liquid
Buffer:	Liquid in PBS containing 50% glycerol, 0.5% BSA and 0.02% sodium azide.
Storage:	Store at -20°C, and avoid repeat freeze-thaw cycles.



Western Blot (WB) analysis of specific cells using NPY2-R polyclonal antibody.



Immunofluorescence F images in A549 cells using NPY2-R, where the right side is blocked with peptide

**For Research use only
IMMUNOLOGICAL SCIENCES**