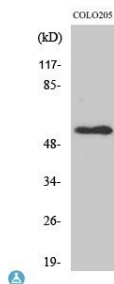
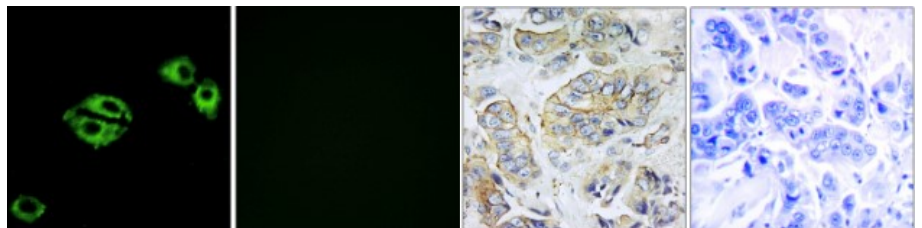


<b>Cat. No:</b>	AB-84233
<b>Conjugate:</b>	Unconjugated
<b>Size:</b>	100 ug
<b>Clone:</b>	POLY
<b>Concentration:</b>	1mg/ml
<b>Host:</b>	Rb
<b>Isotype:</b>	IgG
<b>Immunogen:</b>	Synthesized peptide derived from human NPY5-R
<b>Reactivity:</b>	Hu, Ms, Rt
<b>Applications:</b>	Western Blot: 1:500-1:2000 Immunohistochemistry: 1:100-1:300 Immunofluorescence: 1:200-1:1000 ELISA: 1:20000
<b>Molecular Weight:</b>	48kDa
<b>Purification:</b>	The antibody was affinity-purified from rabbit antiserum by affinitychromatography using epitope-specific immunogen.
<b>Synonyms:</b>	Neuropeptide Y receptor type 5 NPY5-R NPY-Y5 receptor NPYY5-R Y5 Receptor
<b>Background:</b>	Receptor for neuropeptide Y and peptide YY. The activity of this receptor is mediated by G proteins that inhibit adenylate cyclase activity. Seems to be associated with food intake. Could be involved in feeding disorders.
<b>Form:</b>	Liquid
<b>Buffer:</b>	Liquid in PBS containing 50% glycerol, 0.5% BSA and 0.02% sodium azide.
<b>Storage:</b>	Store at -20°C, and avoid repeat freeze-thaw cycles.



Western Blot (WB) analysis of specific cells using NPY5-R polyclonal antibody.



Immunofluorescence (A549 cells - right side blocked with peptide).

Immunohistochemistry - (human breast carcinoma - right side blocked with peptide)

**For Research use only  
IMMUNOLOGICAL SCIENCES**