

Cat. No:	AB-84257
Conjugate:	Unconjugated
Size:	100 ug
Clone:	POLY
Concentration:	1mg/ml
Host:	Rb
Isotype:	IgG
Immunogen:	E. coli-derived human NGF/NGF Beta recombinant protein (Position: S122-A241). Human NGF/NGF Beta shares 92.4% amino acid (aa) sequence identity with rat NGF/NGF Beta.
Reactivity:	Hu
Applications:	ELISA: 0.1-0.5µg/ml Western blot: 0.1-0.5µg/ml
Molecular Weight:	13kDa
Purification:	Aff. Pur.
Synonyms:	Beta-nerve growth factor;Beta-NGF;NGF;NGFB;
Background:	Nerve growth factor is a polypeptide involved in the regulation of growth and differentiation of sympathetic and certain sensory neurons. The nucleotide sequence of human and mouse beta-NGF are very similar. The beta-subunits of nerve growth factor (NGFB) have been assigned to mouse chromosome 3 and human chromosome 1p22. The human gene for the beta subunit of nerve growth factor is located on the proximal short arm of chromosome 1. A mutation in the nerve growth factor beta gene (NGFB) causes loss of pain perception.
Form:	Liquid
Buffer:	Each vial contains 4mg Trehalose, 0.9mg NaCl, 0.2mg Na ₂ HPO ₄ , 0.05mg Na ₃ .
Storage:	At -20°C for one year. After reconstitution, at 4°C for one month. Avoid repeated freezing and thawing.

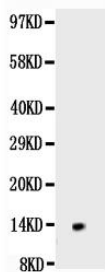


Figure 1. Western blot analysis of NGF/NGF Beta using anti-NGF/NGF Beta antibody. Electrophoresis was performed on a 5-20% SDS-PAGE gel at 70V (Stacking gel) / 90V (Resolving gel) for 2-3 hours. Lane 1: Recombinant Human NGF/NGF Beta Protein 0.5ng After Electrophoresis,

proteins were transferred to a Nitrocellulose membrane at 150mA for 50-90 minutes.
Blocked the membrane with 5% Non-fat Milk/ TBS for 1.5 hour at RT. The membrane was incubated with rabbit anti- NGF/NGF Beta antigen affinity purified polyclonal antibody at 0.5 µg/mL overnight at 4°C, then washed with TBS-0.1%Tween 3 times with 5 minutes each and probed with a goat anti-rabbit IgG-HRP secondary antibody at a dilution of 1:10000 for 1.5 hour at RT. The signal is developed using an Enhanced Chemiluminescent detection (ECL) kit with Tanon 5200 system. A specific band was detected for NGF/NGF Beta at approximately 13KD. The expected band size for NGF/NGF Beta is at 13KD.

**For Research use only
IMMUNOLOGICAL SCIENCES**