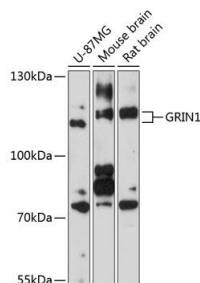
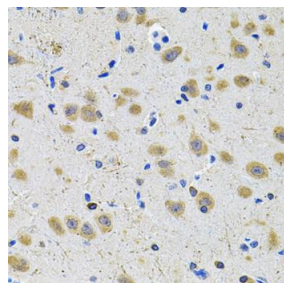


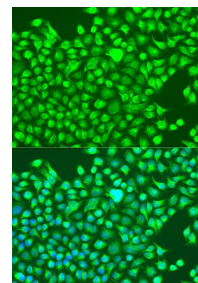
Cat. No:	AB-90170
Conjugate:	Unconjugated
Size:	100 ug
Clone:	POLY
Concentration:	1mg/ml
Host:	Rb
Isotype:	IgG
Immunogen:	A synthetic peptide corresponding to a sequence within amino acids 600-700 of human GRIN1.
Reactivity:	Hu, Ms, Rt
Applications:	Western Blot: 1:500 - 1:2000 Immunohistochemistry: 1:50 - 1:200 Immunofluorescence: 1:50 - 1:200
Molecular Weight:	110kDa
Purification:	Aff. Pur.
Synonyms:	GRIN1;GluN1;MRD8;NMD-R1;NMDA1;NMDAR1;NR1;NMDA1
Background:	The protein encoded by this gene is a critical subunit of N-methyl-D-aspartate receptors, members of the glutamate receptor channel superfamily which are heteromeric protein complexes with multiple subunits arranged to form a ligandgated ion channel. These subunits play a key role in the plasticity of synapses, which is believed to underlie memory and learning. Cell-specific factors are thought to control expression of different isoforms, possibly contributing to the functional diversity of the subunits. Alternatively, spliced transcript variants have been described.
Form:	Liquid
Buffer:	PBS with 0.02% sodium azide,50% glycerol,pH7.3.
Storage:	Store at -20°C. Avoid freeze / thaw cycles.



Western blot analysis of extracts of various cell lines, using GRIN1 antibody at 1:1000 dilution. Secondary antibody: HRP Goat Anti-Rabbit IgG (H+L) at 1:10000 dilution. Lysates/proteins: 25ug per lane. Blocking buffer: 3% nonfat dry milk in



Immunohistochemistry of paraffinembedded rat brain using GRIN1 Antibody at dilution of 1:100 (40x lens).



Immunofluorescence analysis of U2OS cells using GRIN1 antibody at dilution of 1:100. Blue: DAPI for nuclear staining.

TBST.
Detection: ECL West Pico Plus.
Exposure time: 90s.

**For Research use only
IMMUNOLOGICAL SCIENCES**