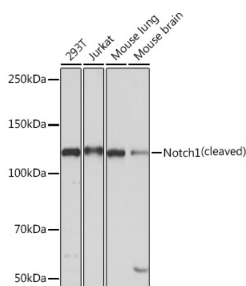


<b>Cat. No:</b>	AB-90186
<b>Conjugate:</b>	Unconjugated
<b>Size:</b>	100µg
<b>Clone:</b>	POLY
<b>Concentration:</b>	1mg/ml
<b>Host:</b>	Rabbit
<b>Isotype:</b>	IgG
<b>Immunogen:</b>	Immunogen A synthetic peptide corresponding to a sequence within amino acids 2456-2555 of human Notch1.
<b>Reactivity:</b>	Human, Mouse
<b>Applications:</b>	Western Blot: 1:500 - 1:2000 Immunoprecipitation: 0.5µg-4µg antibody for 200µg-400µg extracts of whole cells
<b>Molecular Weight:</b>	125kDa
<b>Purification:</b>	Affinity purification
<b>Synonyms:</b>	hN1; AOS5; TAN1; AOVD1; Notch1

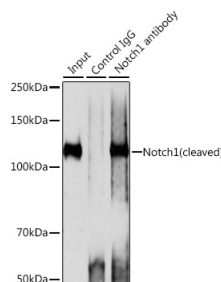
**Background:**

This gene encodes a member of the NOTCH family of proteins. Members of this Type I transmembrane protein family share structural characteristics including an extracellular domain consisting of multiple epidermal growth factor-like (EGF) repeats, and an intracellular domain consisting of multiple different domain types. Notch signaling is an evolutionarily conserved intercellular signaling pathway that regulates interactions between physically adjacent cells through binding of Notch family receptors to their cognate ligands. The encoded preproprotein is proteolytically processed in the trans-Golgi network to generate two polypeptide chains that heterodimerize to form the mature cell-surface receptor. This receptor plays a role in the development of numerous cell and tissue types. Mutations in this gene are associated with aortic valve disease, Adams-Oliver syndrome, Tcell acute lymphoblastic leukemia, chronic lymphocytic leukemia, and head and neck squamous cell carcinoma.

<b>Form:</b>	Liquid
<b>Buffer:</b>	PBS with 0.02% sodium azide,0.05% BSA,50% glycerol,pH7.3.
<b>Storage:</b>	Store at -20°C. Avoid freeze / thaw cycles.



Western blot analysis of various lysates using Notch1 Rabbit pAb at 1:1000 dilution.



Immunoprecipitation analysis of 200 µg extracts of 293T cells using 3 µg Notch1 antibody. Western blot was performed

Secondary antibody: HRP Goat Anti-Rabbit IgG (H+L) at 1:10000 dilution.

Lysates/proteins: 25µg per lane.

Blocking buffer: 3% nonfat dry milk in TBST.

Detection: ECL West Pico Plus.

Exposure time: 3min.

from the immunoprecipitate using Notch1 antibody at a dilution of 1:1000.