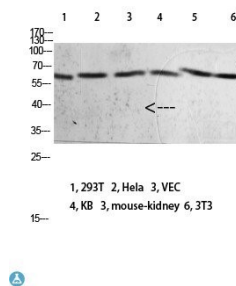
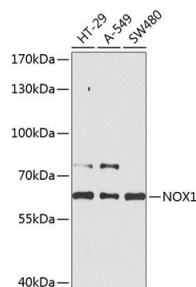


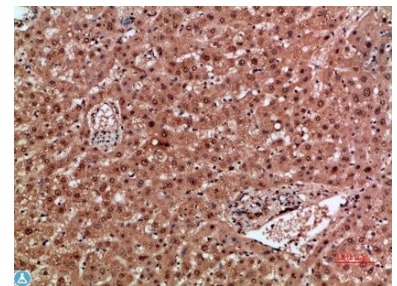
Cat. No:	AB-84209
Size:	100µg
Clone:	POLY
Concentration:	1mg/ml
Host:	Rb
Isotype:	IgG
Immunogen:	Synthetic peptide from human Nox1 protein.
Reactivity:	Hu, Ms, Rt
Applications:	Western Blot: 1:500-2000 Immunohistochemistry (paraffin-embedded tissues): 1:50-300 ELISA: 1:5000-20000
Molecular Weight:	65kDa
Purification:	The antibody was affinity-purified from rabbit serum by affinity chromatography using specific immunogen.
Synonyms:	NADPH oxidase 1 MOX-1 NADH/NADPH mitogenic oxidase subunit P65-MOX NOH-1.
Background:	Specificity: The antibody detects endogenous Nox1. Tissue Specificity: NOH-1L is detected in colon, uterus, prostate, and colon carcinoma, but not in peripheral blood leukocytes. NOH-1S is detected only in colon and colon carcinoma cells.
Form:	Liquid
Buffer:	PBS, pH 7.4, containing 0.02% sodium azide as Preservative and 50% Glycerol.
Storage:	Store at -20°C, and avoid repeat freeze-thaw cycles.



Western blot analysis of 293T Hela VEC KB mouse-kidney 3T3 lysate, antibody was diluted at 2000. Secondary antibody was diluted at 1:20000.



Western blot analysis of extracts of various cell lines, using NOX1 antibody at 1:1000 dilution. Secondary antibody: HRP Goat Anti-Rabbit IgG (H+L) at 1:10000 dilution. Lysates/proteins: 25ug per lane. Blocking buffer: 3% nonfat dry milk in TBST. Detection: ECL West Pico Plus. Exposure time: 10s.



Immunohistochemical analysis of paraffin-embedded human-liver, antibody was diluted at 1:200.

**For Research use only
IMMUNOLOGICAL SCIENCES**