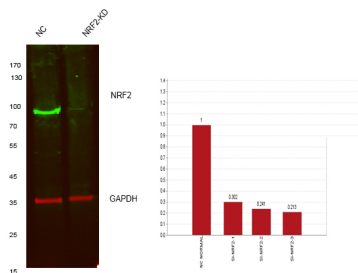
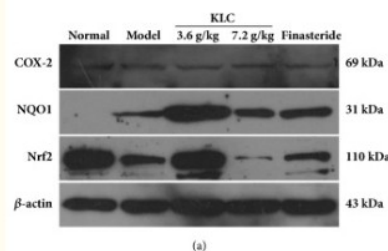


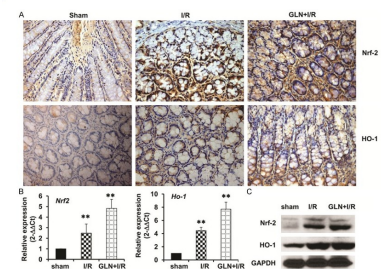
Cat. No:	AB-84017
Conjugate:	Unconjugated
Size:	100 ug
Clone:	POLY
Concentration:	1mg/ml
Host:	Rb
Isotype:	IgG
Immunogen:	The antiserum was produced against synthesized peptide derived from human Nrf2. AA range:556-605.
Reactivity:	Hu, Ms,Rt
Applications:	Western Blot: 1/500 - 1/2000 Immunohistochemistry: 1/100 - 1/300 Immunofluorescence: 1/200 - 1/1000 ELISA: 1/40000
Molecular Weight:	75-100kD
Purification:	The antibody was affinity-purified from rabbit antiserum by affinity-chromatography using epitope-specific immunogen
Synonyms:	NFE2L2; NRF2; Nuclear factor erythroid 2-relatedfactor 2; NF-E2-related factor 2; NFE2-related factor 2; HEBP1; Nuclear factor; erythroid derived 2, like 2
Background:	This gene encodes a transcription factor which is a member of a small family of basic leucine zipper (bZIP) proteins. The encoded transcription factor regulates genes which contain antioxidant response elements (ARE) in their promoters; many of these genes encode proteins involved in response to injury and inflammation which includes the production of free radicals. Multiple transcript variants encoding different isoforms have been characterized for this gene.
Form:	Liquid
Buffer:	Liquid in PBS containing 50% glycerol, 0.5% BSA and 0.02% sodium azide.
Storage:	Store at -20°C. Avoid repeated freeze-thaw cycles.



Western blot analysis of lysates from
1)Hela cell ,
2)Hela cells knockdown by NRF2-siRNA
(F:CAUUGAUGUUUCUGAUCUATT,R:UAGA
UCAGAAACAUC
AAUGTT), (Green) primary antibody was
diluted at 1:1000, 4°over night, Dylight

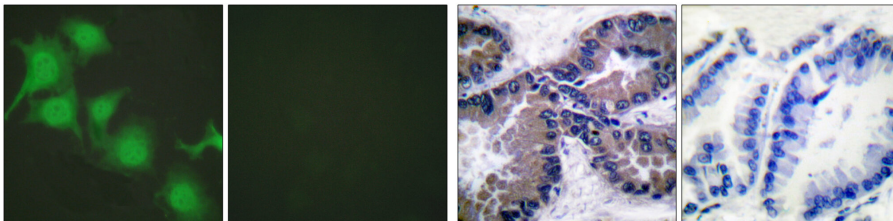


Anti-Inflammatory and Antioxidant
Effects of Kelong-Capsule on
Testosterone-Induced Benign Prostatic
Hyperplasia in Rats." Evidence-Based
Complementary and Alternative
Medicine 2018.



"Glutamine ameliorates intestinal
ischemiareperfusion Injury in rats by
activating the Nrf2/Are signaling
pathway." International journal of clinical
and experimental pathology 8.7 (2015):
7896

800 secondary antibody was diluted at 1:10000, 37° 1hour.
(Red) GAPDH Monoclonal Antibody (5B7) antibody was diluted at 1:5000 as loading control, 4° over night, AF680 secondary antibody was diluted at 1:10000, 37° 1hour.



Immunofluorescence analysis of HUVEC cells, using Nrf2 Antibody. The picture on the right is blocked with the synthesized peptide.

Immunohistochemistry analysis of paraffin-embedded human lung carcinoma tissue, using Nrf2 Antibody. The picture on the right is blocked with the synthesized peptide.