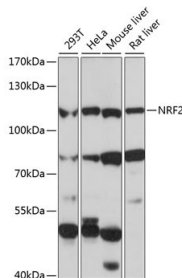


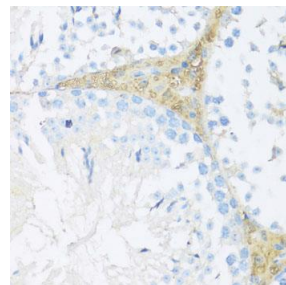
| | |
|--------------------------|---|
| Cat. No: | MAB-94130 |
| Conjugate: | Unconjugated |
| Size: | 100 ug |
| Clone: | SP611 |
| Concentration: | 1mg/ml |
| Host: | Rb |
| Isotype: | IgG |
| Immunogen: | Recombinant protein of human NRF2. |
| Reactivity: | Hu, Ms,Rt |
| Applications: | Western Blot: 1:1000 Immunohistochemistry (paraffin tissues): 1:50 - 1:200 Immunocytochemistry: 1:50 - 1:200 Immunofluorescence: 1:50 - 1:200 |
| Molecular Weight: | 97-100kDa |
| Purification: | Aff. Pur. |
| Background: | This gene encodes a transcription factor which is a member of a small family of basic leucine zipper (bZIP) proteins. The encoded transcription factor regulates genes which contain antioxidant response elements (ARE) in their promoters; many of these genes encode proteins involved in response to injury and inflammation which includes the production of free radicals . Multiple transcript variants encoding different isoforms have been characterized for this gene. |
| Form: | Liquid |
| Buffer: | PBS with 0.05% proclin300,50% glycerol,pH7.3. |
| Storage: | Store at -20°C. Avoid freeze / thaw cycles. |



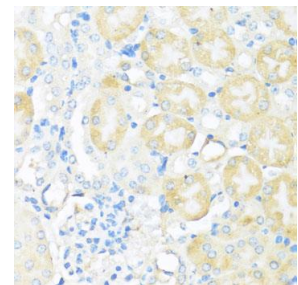
Western Blot - NFE2L2 antibody of various cell lines, using NRF2 antibody at 1:1000 dilution.

Secondary antibody: HRP Goat Anti-Rabbit IgG (H+L) at 1:10,000 dilution.
Lysates/proteins: 25ug per lane.
Blocking buffer:3% nonfat dry milk in TBST

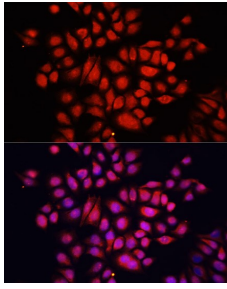
Detection: ECL West Pico Plus Kit
Exposure time: 60s.



Immunohistochemistry - NFE2L2 antibody of paraffin-embedded mouse Leydig cells - dilution 1:100



Immunohistochemistry - NFE2L2 antibody of paraffin-embedded mouse kidney - dilution 1:100



Immunofluorescence analysis of HeLa cells using NFE2L2 antibody using at dilution of 1:100. Blue: DAPI for nuclear staining.

**For Research use only
IMMUNOLOGICAL SCIENCES**