

**Cat. No:** AB-83608  
**Conjugate:** Unconjugated  
**Size:** 100 ug  
**Clone:** POLY  
**Concentration:** 1mg/ml  
**Host:** Rb  
**Isotype:** IgG  
**Immunogen:** Recombinant protein of human OCLN  
**Reactivity:** Hu, Ms ,Rt

**Applications:** WB 1:1000 - 1:2000  
 IHC 1:50 - 1:200  
 IF 1:50 - 1:200

**Molecular Weight:** 59kDa

**Purification:** Aff. Pur.

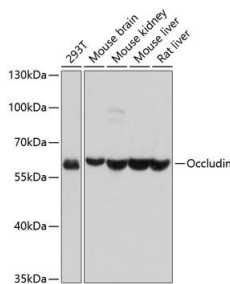
**Background:**

This gene encodes an integral membrane protein that is required for cytokine-induced regulation of the tight junction paracellular permeability barrier. Mutations in this gene are thought to be a cause of band-like calcification with simplified gyration and polymicrogyria (BLC-PMG), an autosomal recessive neurologic disorder that is also known as pseudo-TORCH syndrome. Alternative splicing results in multiple transcript variants. A related pseudogene is present 1.5 Mb downstream on the q arm of chromosome 5.

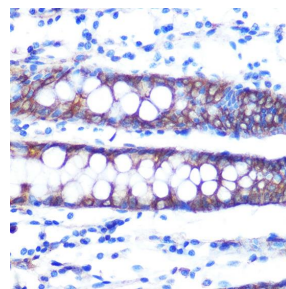
**Form:** Liquid

**Buffer:** PBS with 0.02% sodium azide, 50% glycerol, pH7.3.

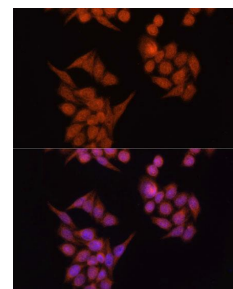
**Storage:** Store at -20°C. Avoid freeze / thaw cycles.



Western blot analysis of extracts of various cell lines, using Occludin antibody at 1:1000 dilution.  
 Secondary antibody: HRP Goat Anti-Rabbit IgG (H+L) at 1:10000 dilution.  
 Lysates/proteins: 25ug per lane.  
 Blocking buffer: 3% nonfat dry milk in TBST.  
 Detection: ECL West Pico Plus  
 Exposure time: 1s.



Immunohistochemistry of paraffin embedded human colon using Occludin Rabbit pAb at dilution of 1:100 (40x lens).

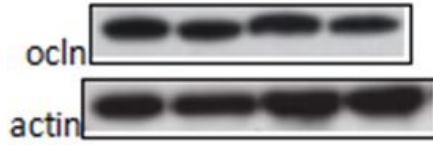


Immunofluorescence analysis of HeLa cells using Occludin antibody at dilution of 1:100. Blue: DAPI for nuclear staining.



Reviews for Occludin Rabbit Polyclonal  
Antibody (AB-83608)

WB



Review for Occludin Rabbit pAb  
(AB-83608)

**For Research use only  
IMMUNOLOGICAL SCIENCES**