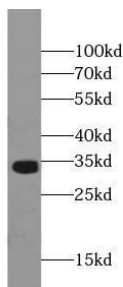
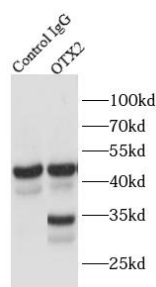


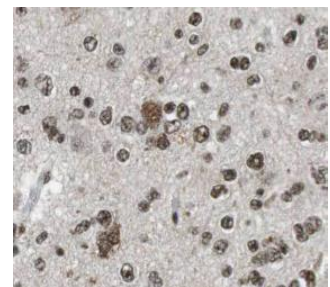
Cat. No:	AB-84239
Conjugate:	Unconjugated
Size:	100 ug
Clone:	POLY
Concentration:	1mg/ml
Host:	Rb
Isotype:	IgG
Immunogen:	orthodenticle homeobox 2
Reactivity:	Hu,Ms,Rt
Applications:	Western Blot: 1:500-1:3000 Immunoprecipitation: 1:500-1:3000 Immunohistochemistry (paraffin-embedded tissues): 1:20-1:200 Immunohistochemistry (frozen tissues): 1:20-1:200
Molecular Weight:	32kDa
Purification:	Aff. Pur.
Synonyms:	Homeobox protein OTX2, MCOPS5, orthodenticle homeobox 2, Orthodenticle homolog 2, OTX2
Background:	Probably plays a role in the development of the brain and the sense organs. Can bind to the BCD target sequence(BTS): 5'-TCTAATCCC-3'.
Form:	Liquid
Buffer:	PBS with 0.02% sodium azide and 50% glycerol pH 7.3
Storage:	T -20°C for 24 months Avoid repeated freeze / thaw cycles.)



Y79 cells were subjected to SDS PAGE followed by western blot with (OTX2 antibody) at dilution of 1:500



IP Result of anti-OTX2 (IP: , 3ug; Detection: 1:1500) with Y79 cells lysate 2400ug.



Immunohistochemistry of paraffin-embedded human gliomas using (OTX2 antibody) at dilution of 1:100

**For Research use only
IMMUNOLOGICAL SCIENCES**