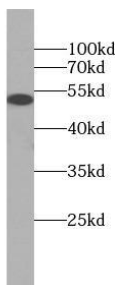
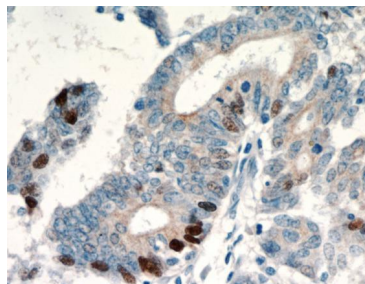


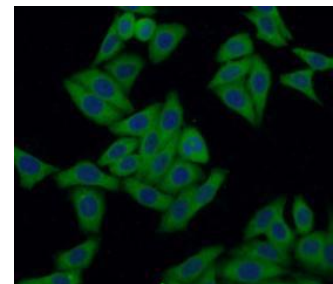
Cat. No:	AB-84332
Size:	100 ug
Clone:	KIP1
Concentration:	1mg/ml
Host:	Ms
Isotype:	IgG
Immunogen:	tumor protein p53
Reactivity:	Hu, Ms , Rt
Applications:	Western Blot: 1:500 - 1:2000 Immunohistochemistry: 1:50 - 1:200 Immunofluorescence: 1:20 - 1:100
Molecular Weight:	53kDa
Purification:	Aff. Pur. ≥95% as determined by SDS-PAGE
Synonyms:	Antigen NY CO 13, Cellular tumor antigen p53, FLJ92943, LFS1, P53, Phosphoprotein p53, TP53, TRP53, tumor protein p53, Tumor suppressor p53
Background:	This gene encodes a tumor suppressor protein containing transcriptional activation, DNA binding, and oligomerization domains. The encoded protein responds to diverse cellular stresses to regulate expression of target genes, thereby inducing cell cycle arrest, apoptosis, senescence, DNA repair, or changes in metabolism. Mutations in this gene are associated with a variety of human cancers, including hereditary cancers such as Li-Fraumeni syndrome. Alternative splicing of this gene and the use of alternate promoters result in multiple transcript variants and isoforms. Additional isoforms have also been shown to result from the use of alternate translation initiation codons from identical transcript variants.
Form:	Liquid
Buffer:	PBS with 0.02% sodium azide, 50% glycerol, pH7.3
Storage:	T -20°C for 12 months (Avoid repeated freeze / thaw cycles.)



MCF7 cells were subjected to SDS PAGE followed by western blot with (P53 antibody) at dilution of 1:1000



Immunohistochemistry of paraffin-embedded human endometrial cancer using (P53 antibody) at dilution of 1:100



Immunofluorescent analysis of HepG2 cells using (P53 Antibody) at dilution of 1:50 and Alexa Fluor 488-conjugated Goat Anti-Rabbit IgG (H+L)

**For Research use only
IMMUNOLOGICAL SCIENCES**