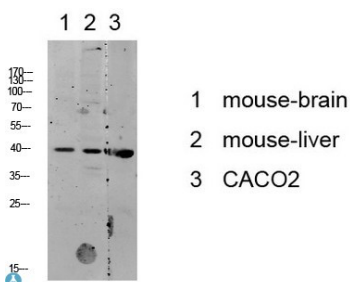


<b>Cat. No:</b>	MAB-94449
<b>Size:</b>	100 ug
<b>Clone:</b>	3D7
<b>Concentration:</b>	1mg/ml
<b>Host:</b>	Rb
<b>Isotype:</b>	IgG
<b>Immunogen:</b>	Synthesized peptide derived from human p38 MAPK.
<b>Reactivity:</b>	Hu, Ms, Rt
<b>Applications:</b>	Western Blot: 1:500-2000 ELISA: 1:10000-20000
<b>Molecular Weight:</b>	42kDa
<b>Purification:</b>	The antibody was affinity-purified from rabbit antiserum by affinitychromatography using epitope-specific immunogen.
<b>Synonyms:</b>	Mitogen-activated protein kinase 14 MAP kinase 14 MAPK 14 Cytokine suppressive anti-inflammatory drug-binding protein CSAID-binding protein CSBP MAP kinase MXI2 MAX-interacting protein 2 Mitogen-activated pr.
<b>Background:</b>	Serine/threonine kinase which acts as an essential component of the MAP kinase signal transduction pathway. MAPK14 is one of the four p38 MAPKs which play an important role in the cascades of cellular responses evoked by extracellular stimuli such as proinflammatory cytokines or physical stress leading to direct activation of transcription factors.
<b>Form:</b>	Liquid
<b>Buffer:</b>	Liquid in PBS containing 50% glycerol, 0.5% BSA and 0.02% sodium azide.
<b>Storage:</b>	Store at -20°C, and avoid repeat freeze-thaw cycles



Western blot analysis of various lysate,  
antibody was diluted at 1000.  
Secondary antibody was diluted at  
1: 20000.

**For Research use only  
IMMUNOLOGICAL SCIENCES**