

Cat. No: AB-83572
Size: 100 ug
Clone: POLY
Concentration: 1mg/ml
Host: Rb
Isotype: IgG
Reactivity: Hu, Ms, Rt

Applications: Western blot: 1:1000
 Immunohistochemistry: 1:50-1:200
 Immunofluorescence: 1:50-1:100
 Immunoprecipitation: 1:50-1:100

Molecular Weight: 41kDa

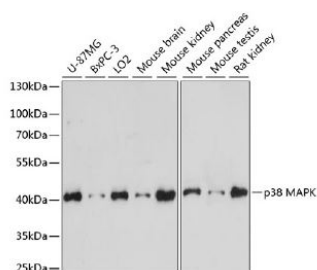
Purification: Polyclonal antibodies are produced by immunizing animals with a synthetic peptide corresponding to the sequence of human p38 MAPK. Antibodies are purified by protein A and peptide affinity chromatography.

Background: p38 MAP kinase (MAPK), also called RK (1) or CSBP (2), is the mammalian orthologue of the yeast HOG kinase that participates in a signaling cascade controlling cellular responses to cytokines and stress (1- 4). Four isoforms of p38 MAP kinase, p38 α , β , γ (also known as ERK6 or SAPK3) and δ (also known as SAPK4) have been identified. Similar to the SAPK/JNK pathway, p38 MAP kinase is activated by a variety of cellular stresses including osmotic shock, inflammatory cytokines, lipopolysaccharides (LPS), UV light and growth factors (1-5). MKK3, MKK6 and SEK activate p38 MAP kinase by phosphorylation at Thr180 and Tyr182. Activated p38 MAP kinase has been shown to phosphorylate and activate MAPKAP kinase 2 (3) and to phosphorylate the transcription factors ATF-2 (5), Max (6) and MEF2 (5-8). p38 MAP Kinase Antibody detects endogenous levels of total p38 α , - β or - γ MAPK protein. This antibody does not recognize p38 δ , JNK/SAPK or p44/42 MAPK.

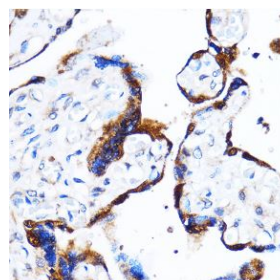
Form: Liquid

Buffer: PBS with 0.02% sodium azide, 50% glycerol, pH7.3

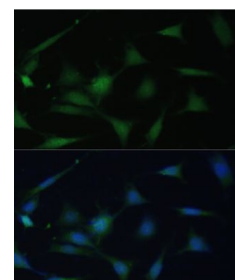
Storage: Store at -20°C, and avoid repeat freeze-thaw cycles



Western blot analysis of extracts of various cell lines, using p38 MAPK antibody at 1:1000 dilution. Secondary antibody: HRP



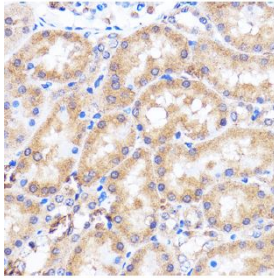
Immunohistochemistry of paraffinembedded Human placenta using p38 MAPK Rabbit pAb at dilution of 1:100



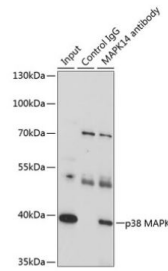
Immunofluorescence analysis of NIH-3T3 cells using p38 MAPK antibody at dilution of 1:100. Blue: DAPI for nuclear staining.

Goat Anti-Rabbit IgG (H+L) at 1:10000 dilution.
Lysates/proteins: 25ug per lane.
Blocking buffer: 3% nonfat dry milk in TBST.
Detection: ECL West Pico Plus. Exposure time: 30s.

(40x lens).



Immunohistochemistry of paraffinembedded Rat kidney using p38 MAPK Rabbit pAb at dilution of 1:100 (40x lens).



Immunoprecipitation analysis of 200ug extracts of U-87MG cells, using 3 ug p38 MAPK antibody. Western blot was performed from the immunoprecipitate using p38 MAPK antibody at a dilution of 1:1000.