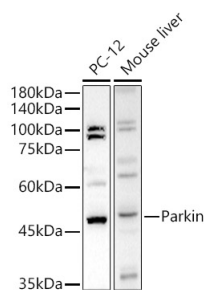
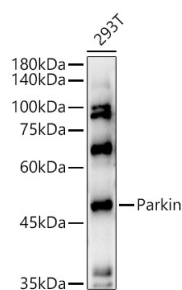


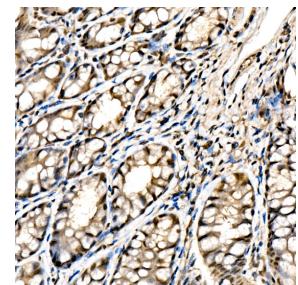
Cat. No:	AB-84037
Conjugate:	Unconjugated
Size:	100ug
Clone:	POLY
Concentration:	1mg/ml
Host:	Rabbit
Isotype:	IgG
Immunogen:	Recombinant fusion protein containing a sequence corresponding to amino acids 81-280 of human Parkin
Reactivity:	Human, Mouse, Rat
Applications:	Western Blot 1:100 - 1:500 Immunohistochemistry (P) 1:50 - 1:200
Molecular Weight:	52 kDa
Purification:	Affinity Purified
Synonyms:	PDJ; AR-JP; LPRS2; PARKIN
Background:	<p>The precise function of this gene is unknown; however, the encoded protein is a component of a multiprotein E3 ubiquitin ligase complex that mediates the targeting of substrate proteins for proteasomal degradation. Mutations in this gene are known to cause Parkinson disease and autosomal recessive juvenile Parkinson disease.</p> <p>Alternative splicing of this gene produces multiple transcript variants encoding distinct isoforms. Additional splice variants of this gene have been described but currently lack transcript support.</p>
Form:	Liquid
Buffer:	PBS with 0.05% proclin300,50% glycerol, pH7.3.
Storage:	Store at -20°C. Avoid freeze / thaw cycles.



Western blot analysis of extracts of various cell lines, using Parkin antibody at 1:500 dilution.
Secondary antibody: HRP Goat Anti-Rabbit IgG (H+L) at 1:10000 dilution.
Lysates/proteins: 25µg per lane.
Blocking buffer: 3% nonfat dry milk in TBST.
Detection: ECL Basic Kit.

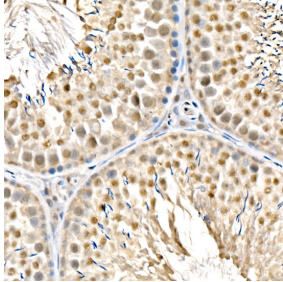


Western blot analysis of extracts of 293T cells, using Parkin antibody at 1:500 dilution.
Secondary antibody: HRP Goat Anti-Rabbit IgG (H+L) at 1:10000 dilution.
Lysates/proteins: 25µg per lane.
Blocking buffer: 3% nonfat dry milk in TBST.
Detection: ECL Enhanced Kit.



Immunohistochemistry analysis of paraffin-embedded mouse colon using Parkin Rabbit pAb at dilution of 1:100 (40x lens).
Perform high pressure antigen retrieval with 10 mM citrate buffer pH 6.0 before commencing with IHC staining protocol

Exposure time: 180s



Exposure time: 180s.

Immunohistochemistry analysis of paraffin-embedded rat testis using Parkin Rabbit pAb at dilution of 1:100 (40x lens).

Perform high pressure antigen retrieval with 10 mM citrate buffer pH 6.0 before commencing with IHC staining protocol.

**For Research use only
IMMUNOLOGICAL SCIENCES**