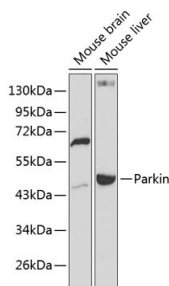


Cat. No:	AB-84146
Conjugate:	Unconjugated
Size:	100 ug
Clone:	Poly
Concentration:	1mg/ml
Host:	Rb
Isotype:	IgG
Immunogen:	Recombinant fusion protein containing a sequence corresponding to amino acids 1-300 of human Parkin.
Reactivity:	Ms
Applications:	Western Blot: 1:500 - 1:2000 Immunofluorescence: 1:50 - 1:100
Molecular Weight:	48-65 kDa
Purification:	Aff. Pur.
Background:	Background: The precise function of this gene is unknown; however, the encoded protein is a component of a multiprotein E3 ubiquitin ligase complex that mediates the targeting of substrate proteins for proteasomal degradation. Mutations in this gene are known to cause Parkinson disease and autosomal recessive juvenile Parkinson disease. Alternative splicing of this gene produces multiple transcript variants encoding distinct isoforms. Additional splice variants of this gene have been described but currently lack transcript support.
Form:	Liquid
Buffer:	Liquid in PBS containing 0.02% sodium azide, 50% glycerol, Ph7.3.
Storage:	At +4°C for short term. For longer term store at -20°C, avoid repeat freeze-thaw cycles.

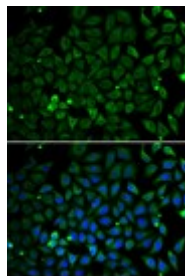


Western blot on Mouse cells
Western blot analysis of extracts of
various cell lines, using Parkin antibody
at 1:1000 dilution.

Secondary antibody: HRP Goat Anti-
Rabbit IgG (H+L) at 1:10000 dilution.

Lysates/proteins: 25ug per lane.

Blocking buffer: 3% nonfat dry milk in
TBST



Immunofluorescence analysis of mouse
cells using Parkin antibody

**For Research use only
IMMUNOLOGICAL SCIENCES**