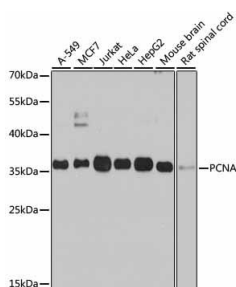
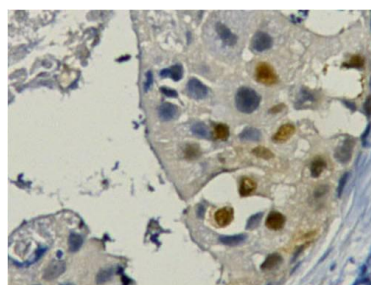


Cat. No:	AB-81598
Conjugate:	Unconjugated
Size:	100 ug
Clone:	POLY
Concentration:	1mg/ml
Host:	Rabbit
Isotype:	IgG
Immunogen:	The antiserum was produced against synthesized peptide derived from human PCNA. AA range:61-110
Reactivity:	Human;Mouse;Rat;Monkey;Rabbit Western Blot: 1:500-2000 Immunohistochemistry(paraffin-embedded tissues): 1:100-500 Immunofluorescence: 1:100-500 Immunocytochemistry: 100-500 ELISA 1:5000-20000
Applications:	
Molecular Weight:	36kDa
Purification:	The antibody was affinity-purified from rabbit antiserum by affinity-chromatography using epitope-specific immunogen.
Synonyms:	PCNA; Proliferating cell nuclear antigen; PCNA; Cyclin
Background:	The protein encoded by this gene is found in the nucleus and is a cofactor of DNA polymerase delta. The encoded protein acts as a homotrimer and helps increase the processivity of leading strand synthesis during DNA replication. In response to DNA damage, this protein is ubiquitinated and is involved in the RAD6-dependent DNA repair pathway. Two transcript variants encoding the same protein have been found for this gene. Pseudogenes of this gene have been described on chromosome 4 and on the X chromosome.
Form:	Liquid
Buffer:	Liquid in PBS containing 50% glycerol, 0.5% BSA and 0.02% sodium azide.
Storage:	Store at -20°C. Avoid repeated freeze-thaw cycles



Western blot analysis of extracts of various cell lines, using PCNA antibody at 1:1000 dilution.
Secondary antibody: HRP Goat Anti-Rabbit IgG (H+L) at 1:10000 dilution.
Lysates/proteins: 25ug per lane.



Immunohistochemistry analysis of paraffin-embedded human breast carcinoma tissue, using PCNA Antibody. The picture on the right is blocked with the synthesized peptide.

Blocking buffer: 3% nonfat dry milk in
TBST.

Detection: ECL West Pico Plus.
Exposure time: 60s.

**For Research use only
IMMUNOLOGICAL SCIENCES**