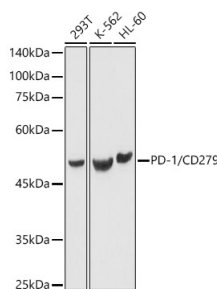
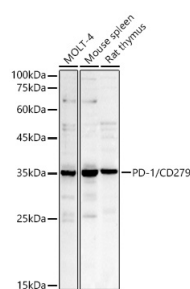


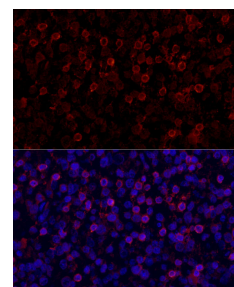
Cat. No:	AB-84286
Conjugate:	Unconjugated
Size:	100 ug
Clone:	POLY
Concentration:	1mg/ml
Host:	Rabbit
Isotype:	IgG
Immunogen:	Recombinant fusion protein containing a sequence corresponding to amino acids 205-259 of human PD-1/CD279.
Reactivity:	Human, Mouse, Rat
Applications:	Western Blot: 1:500 - 1:1000 Immunofluorescence: 1:50 - 1:200 Immunocytochemistry: 1:50 - 1:200 ELISA Recommended starting concentration is 1 µg/mL. Please optimize the concentration based on your specific assay requirements.
Molecular Weight:	50kDa/35kDa
Purification:	Affinity purification
Synonyms:	PD1; PD-1; CD279; SLEB2; hPD-1; hPD-I; hSLE1; PD-1/CD279
Background:	Programmed cell death protein 1 (PDCD1) is an immune-inhibitory receptor expressed in activated T cells; it is involved in the regulation of T-cell functions, including those of effector CD8+ T cells. In addition, this protein can also promote the differentiation of CD4+ T cells into T regulatory cells. PDCD1 is expressed in many types of tumors including melanomas, and has demonstrated to play a role in anti-tumor immunity. Moreover, this protein has been shown to be involved in safeguarding against autoimmunity, however, it can also contribute to the inhibition of effective anti-tumor and anti-microbial immunity.
Form:	Liquid
Buffer:	PBS with 0.02% sodium azide, 50% glycerol, pH 7.3.
Storage:	Store at -20°C. Avoid freeze / thaw cycles.



Western blot analysis of various lysates using PD-1/CD279 Rabbit pAb at 1:1000 dilution.



Western blot analysis of various lysates using PD-1/CD279 Rabbit pAb at 1:1000 dilution.



Immunofluorescence analysis of paraffin-embedded human tonsil using PD-1/CD279 Rabbit pAb at dilution of

Secondary antibody: HRP-conjugated
Goat anti-Rabbit IgG (H+L) at 1:10000
dilution.

Lysates/proteins: 25µg per lane.

Blocking buffer: 3% nonfat dry milk in
TBST.

Detection: ECL West Pico Plus.

Exposure time: 1s.

Secondary antibody: HRP-conjugated
Goat anti-Rabbit IgG (H+L) at 1:10000
dilution.

Lysates / proteins: 25 µg per lane.

Blocking buffer: 3 % nonfat dry milk in
TBST.

Detection: ECL West Pico Plus.

Exposure time: 30s.

1:100 (40xlens). Secondary antibody:
Cy3-
conjugated Goat anti-Rabbit IgG(H+L)
(AS007) at 1:500 dilution. Blue: DAPI for
nuclear staining.