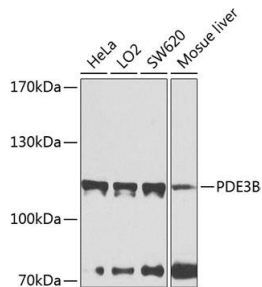


Cat. No:	AB-J2172
Size:	100ug
Clone:	POLY
Concentration:	1mg/ml
Host:	Rb
Isotype:	IgG
Immunogen:	Recombinant fusion protein containing a sequence corresponding to amino acids 400-660 of human PDE3B
Reactivity:	Hu, Ms
Applications:	WB 1:500 - 1:2000
Molecular Weight:	115kDa
Purification:	Aff. Pur.
Synonyms:	PDE3B;HcGIP1;cGIPDE1
Form:	Liquid
Buffer:	PBS with 0.02% sodium azide, 50% glycerol, pH7.3.
Storage:	Store at -20°C. Avoid freeze / thaw cycles.



Western blot analysis of extracts of various cell lines, using PDE3B antibody at 1:1000 dilution.
Secondary antibody: HRP Goat Anti-Rabbit IgG (H+L) at 1:10000 dilution.
Lysates/proteins: 25ug per lane.
Blocking buffer: 3% nonfat dry milk in TBST.
Detection: ECL West Pico Plus
Exposure time: 40s.

**For Research use only
IMMUNOLOGICAL SCIENCES**