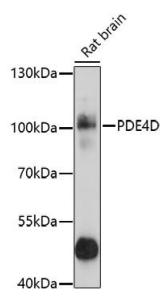


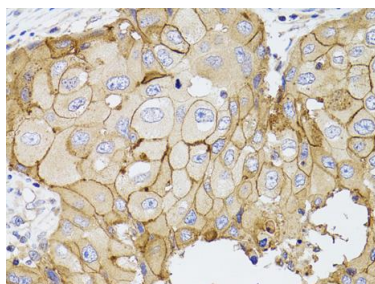
Cat. No:	AB-83940
Size:	100 ug
Clone:	POLY
Concentration:	1mg/ml
Host:	Rb
Isotype:	IgG
Immunogen:	Recombinant fusion protein containing a sequence corresponding to amino acids 249-518 of human PDE4D
Reactivity:	Hu, Ms, Rt
Applications:	Western Blot: 1:500 -1:1000 Immunohistochemistry: 1:50 -1:100
Molecular Weight:	91kDa, 105kDa
Purification:	Aff. Pur.
Synonyms:	PDE4D; ACRDYS2; DPDE3; HSPDE4D; PDE43; PDE4DN2 ; STRK1; phosphodiesterase 4D
Background:	This gene encodes one of four mammalian counterparts to the fruit fly 'dunce' gene. The encoded protein has 3',5'-cyclic-AMP phosphodiesterase activity and degrades cAMP, which acts as a signal transduction molecule in multiple cell types. This gene uses different promoters to generate multiple alternatively spliced transcript variants that encode functional proteins.
Form:	Liquid
Buffer:	PBS with 0.02% sodium azide, 50% glycerol, pH7.3.
Storage:	Store at -20°C. Avoid freeze / thaw cycles.



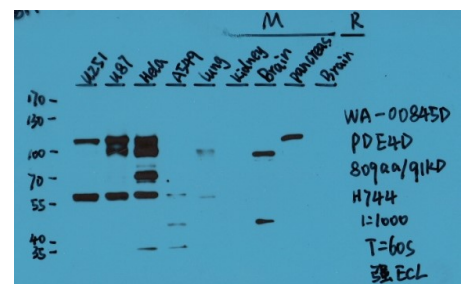
Western blot analysis of extracts of rat brain, using PDE4D antibody at 1:1000 dilution.

Secondary antibody: HRP Goat Anti-Rabbit IgG (H+L) at 1:10000 dilution.
Lysates/proteins: 25ug per lane.
Blocking buffer: 3% nonfat dry milk in TBST.

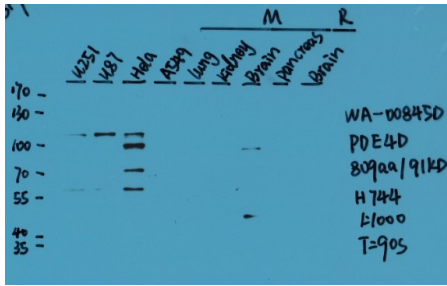
Detection: ECL Basic Kit
Exposure time: 5s.



Immunohistochemistry of paraffin-embedded human breast cancer using PDE4D antibody at dilution of 1:100 (40x lens).



WB strong expose, strong ECL



**For Research use only
IMMUNOLOGICAL SCIENCES**